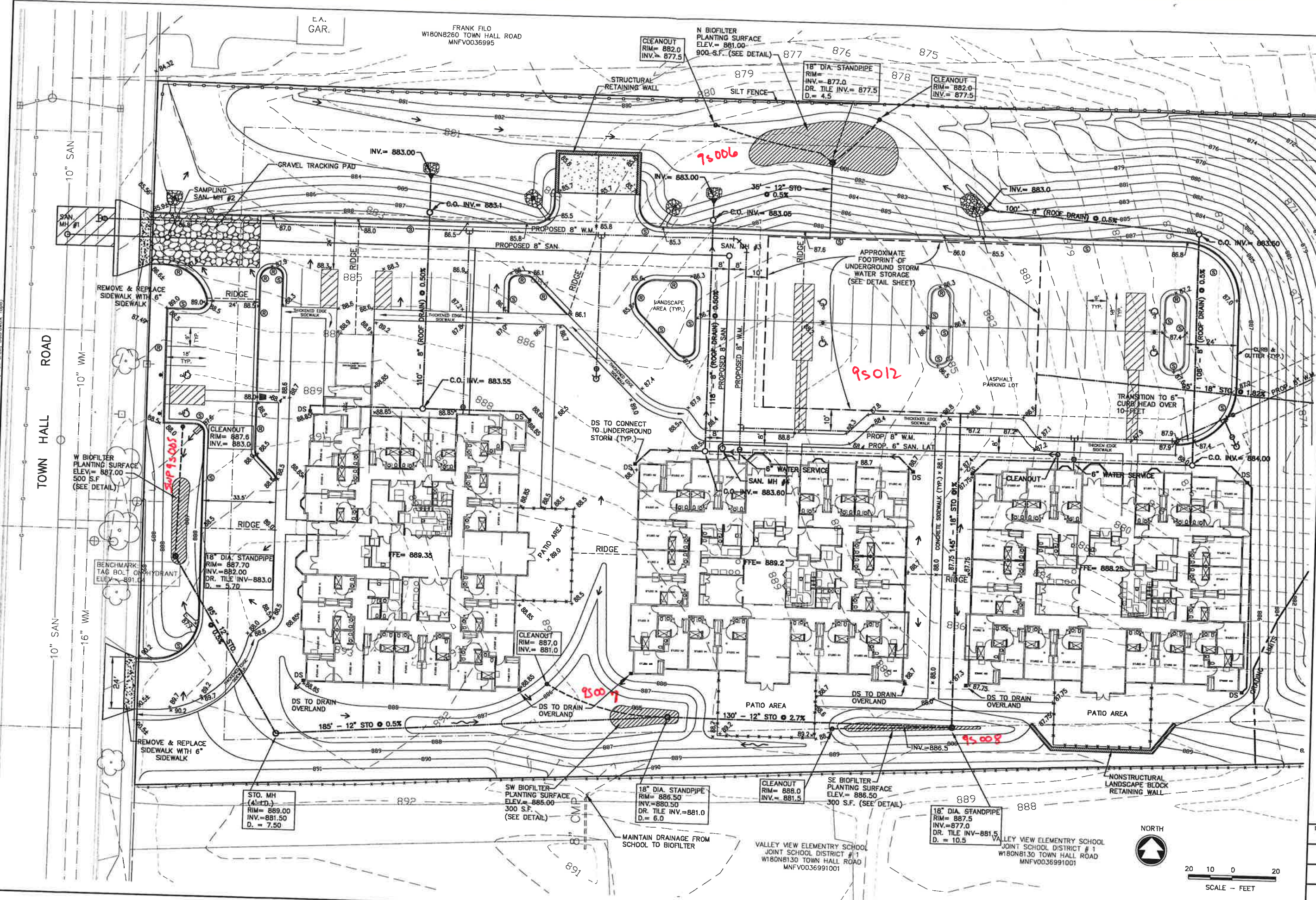


W:\PROJECTS\B10119\10209\003R-Drainage and Erosion Control.dwg, Model, 8/18/2011 8:47:24 AM, jschaff, 1:40

W:\PROJECTS\B10119\10209\003R-Drainage and Erosion Control.dwg, 07/27/11, 8:13 AM, [X-Existing Topo, Brady Compas DEW, P.S.S. Corner, Pkg. 2-Proposed Site 082711, TopoSheet, Bspdwk.dwg]



**McMAHON**  
ENGINEERS ARCHITECTS

1445 McMAHON DRIVE NEENAH, WI 54956  
 Phone: (920) 751-4200 Fax: (920) 751-4284  
 www.mcmahon.com

McMAHON hereby certifies that the drawings and data herein are the work of its duly licensed and registered professional engineers and architects. The client and/or user of these drawings and data shall be deemed to have accepted the responsibility and hold McMAHON harmless from and against any and all claims, damages, losses, and expenses, including reasonable attorneys' fees, that may be incurred by the client and/or user, arising out of or in connection with the use of these drawings and data, whether or not such claims, damages, losses, and expenses are caused in whole or in part by the negligence of McMAHON.

NO.	DATE	REVISION
1	8/12/11	ADDED VALVE

**MENOMONEE FALLS ASSISTED LIVING  
VILLAGE OF MENOMONEE FALLS  
DRAINAGE & EROSION CONTROL PLAN**

DESIGNED JLS	DRAWN JLS
PROJECT NO. B1011-910209	
DATE APRIL 2011	
SHEET NO. <b>3</b>	



20 10 0 20  
SCALE - FEET