

Chapter 4

RECREATIONAL TRAIL INVENTORY

MENOMONEE FALLS MULTI-PURPOSE TRAILS AND BIKE LANES

The Village of Menomonee Falls provides approximately 14 miles of multi-purpose paved paths and bike lanes along the Menomonee River and major streets. The trails range from 3 feet to 10 feet wide, depending on conditions and location. The Village maintains the trails but does not plow snow on the trails in winter and does not require adjoining properties to perform any maintenance. The Village also provides approximately 2 miles of bike lanes along Lilly Road. Additionally, much of the Village is connected by sidewalk, especially in the in the northeastern quadrant.

Good Hope Road Multi-Purpose Trail

This trail is a multi-purpose, road-separated paved trail that travels on alternating sides of Good Hope Road from 124th Street to Pilgrim Road stretching approximately 2 miles. The North Hills Neighborhood portion of the trail is landscaped with turnouts, benches, and plantings.

Lilly Road Trail

This trail includes several sections along Lilly Road. The section from Hampton Avenue to Silver Spring Drive is a paved off-road trail on the west side of Lilly Road. The section from Silver Spring Drive to Good Hope Road is a northbound bike lane on the east shoulder of Lilly Road.

Menomonee River Trail

This multi-purpose paved trail stretches from Shady Lane to Lilly Road, a length of about three miles. The trail follows the Menomonee River through parkland and natural areas.

Pilgrim Road Multi-Purpose Trail

This multi-purpose, road-separated trail runs along Pilgrim Road from Lisbon Road to Appleton Avenue, a length of about 4.5 miles. Sidewalks continue north to County Line Road for about another 1.5 miles.

Tamarack Multi-Purpose Trail

This multi-purpose, road-separated paved trail is located along Shady Lane from Menomonee Avenue to the intersections with Overlook Trail, where it continues to the end of the Overlook Subdivision, and from Shady Lane east, along the north side of the Tamarack Preserve to LaVergne Avenue along Tamarack Trail. One parking lot on Shady Lane serves the trail and the Tamarack Preserve. As development occurs, plans are to continue to construct the multi-use trail segments around the Preserve

OTHER TRAIL FACILITIES

Bugline Multi-Purpose Trail

This 12.2 mile multi-purpose trail was built in 1983 on the Chicago, Milwaukee, St. Paul, and Pacific Railroad right-of-way. It stretches from Appleton Avenue in Menomonee Falls to Main Street in Merton. The trail travels through wooded sections and past quarries. Expansion plans

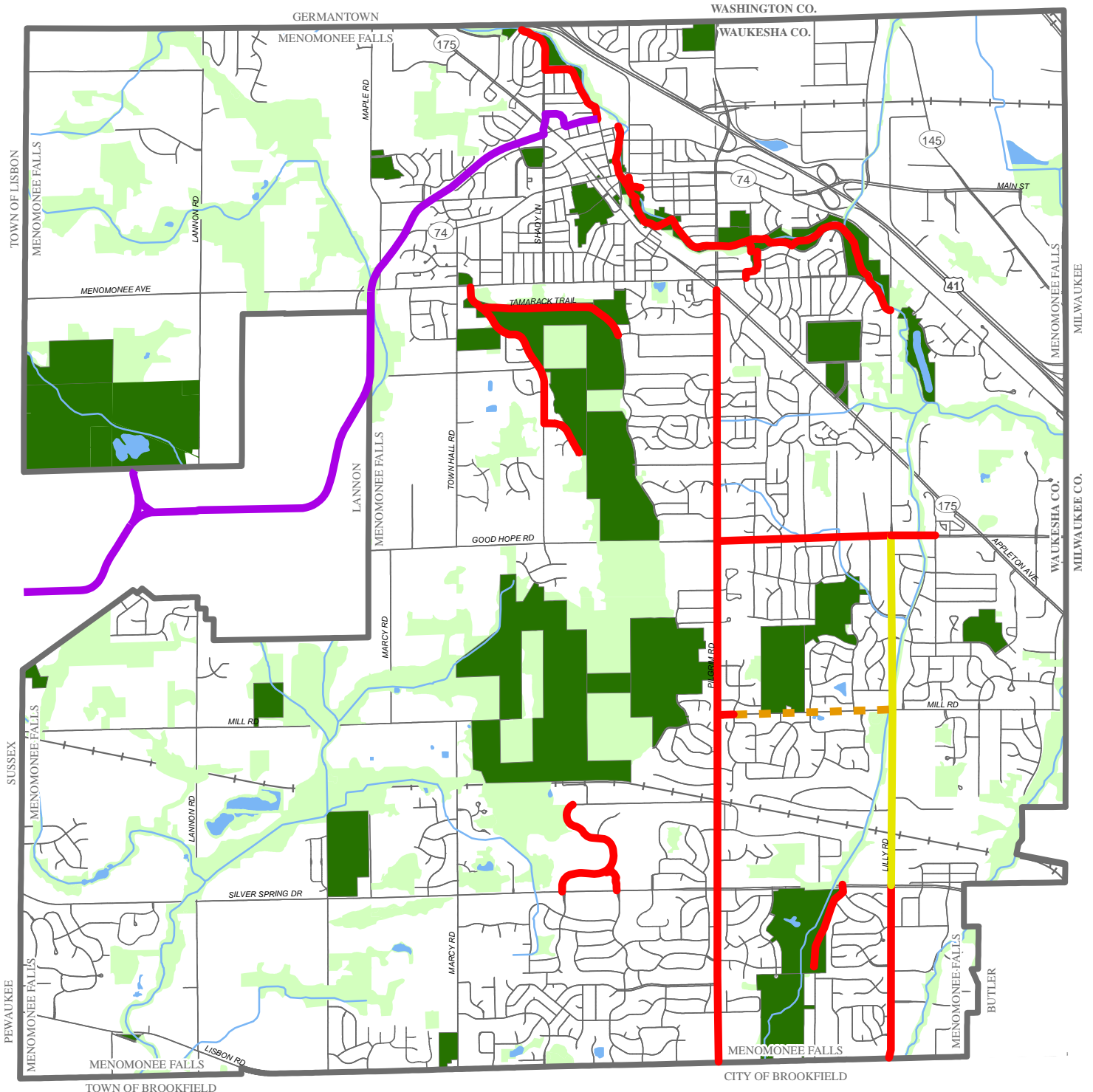
call for extensions to Monches Park to the north and Milwaukee County's Oak Leaf Trail to the east. The trail is eight feet wide for recreational use. A four foot wide bridle trail travels along side it for 2.5 miles from south from Menomonee Avenue to Menomonee Park where it connects with bridle trails in the park. The trail is available for walking, jogging, bicycling, and snowmobiling on marked sections. Waukesha County owns 251 acres along the trail in a 75 foot wide corridor that covers 112 acres and five parcels totaling 93 acres (Waukesha County Park and Open Space Plan, 1996). The Village of Menomonee Falls has added sidewalks to connect the Bugline to the Menomonee River Trail along Shady Lane at Appleton Avenue, Appletree Court, and Grand Avenue. Additional recommendations to increase connectivity in this area are described in Chapters 7 and 8.

MAPS

Maps 5 through 7 depict the existing trail infrastructure in the Village of Menomonee Falls. Map 5 shows the existing bikeways, which includes trails that can be used by bikes. Bikeways are made up of multi-purpose trails, bike lanes, and on-street routes marked by signage. Map 6 depicts existing pedestrian ways, which include multi-purpose trails and sidewalks. Map 7 shows recreation trails, which are trails running through or adjacent to parks or environmental areas.

Map 5

EXISTING BIKEWAYS IN THE VILLAGE OF MENOMONEE FALLS



- Bugline Trail (Multi-Purpose, County)
- Multi-Purpose Trail (Village)
- Partial Bike Lane (Village)
- Gravel Shoulder (Village)
- Village of Menomonee Falls
- Hydrology
- Recreation Site
- Environmentally Significant Lands



0 0.5 1 Mile

This map is intended for informational purposes only and does not replace the need for land or field survey. The Village of Menomonee Falls makes no representations regarding map accuracy or fitness for any use. This map does not represent an expressed or implied contract with the Village of Menomonee Falls. All parties must obtain the permission of the Village of Menomonee Falls before re-releasing this map or copies of the information displayed on or derived from it.

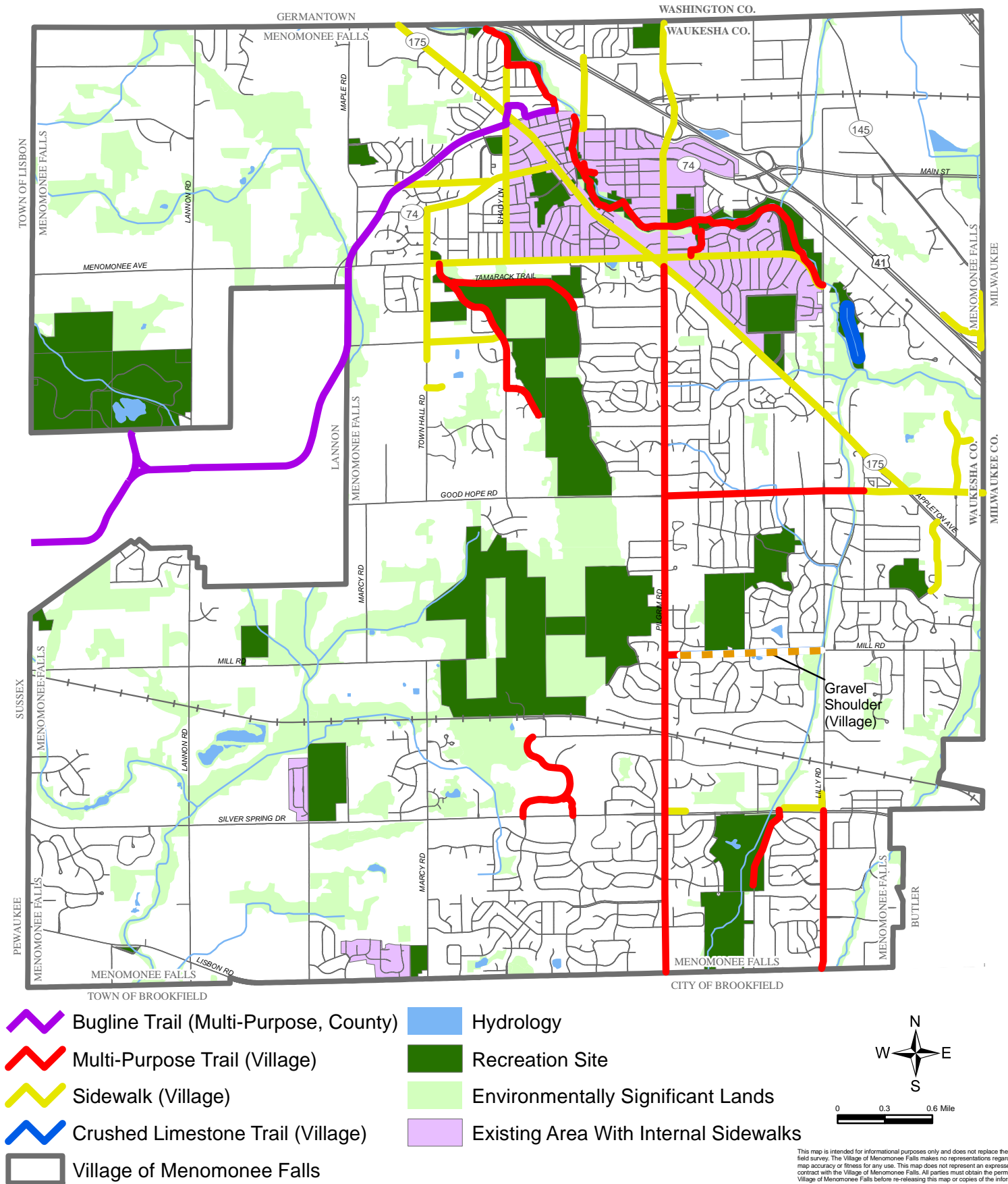
Source: SEWRPC and Village of Menomonee Falls

Map Accuracy: National Map Accuracy Standards
Coordinate System: State Plane Coordinate System
Datum: North American Datum, 1927



Map 6

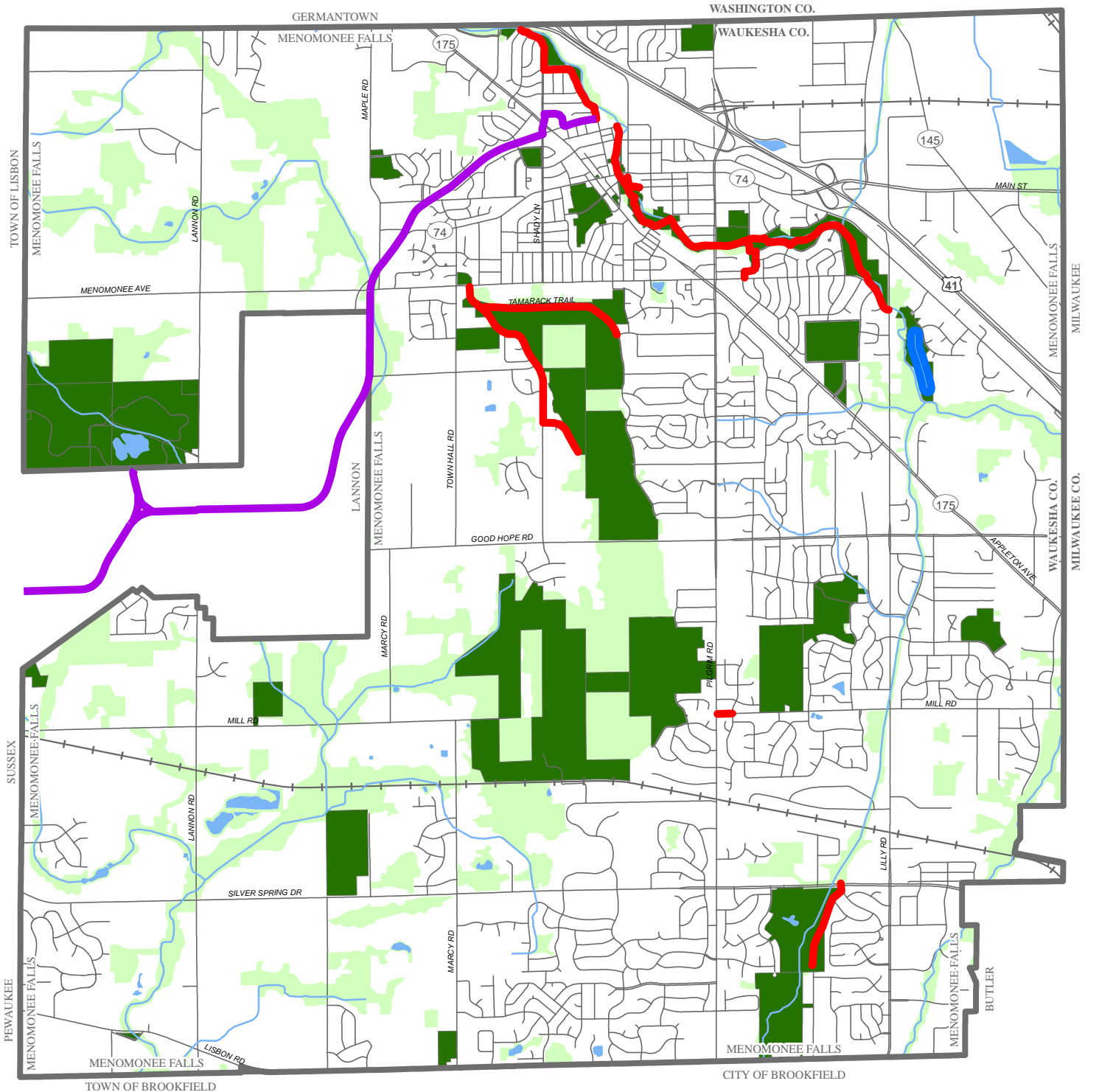
EXISTING PEDESTRIAN WAYS IN THE VILLAGE OF MENOMONEE FALLS







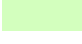


Source: SEWRPC and Village of Menomonee Falls

Map 7

EXISTING RECREATION TRAILS IN THE VILLAGE OF MENOMONEE FALLS



-  Bugline Trail (Multi-Purpose, County)
-  Multi-Purpose Trail (Village)
-  Gravel Trail (Village)
-  Village of Menomonee Falls
-  Hydrology
-  Recreation Site
-  Environmentally Significant Lands



0 0.5 1 Mile

This map is intended for informational purposes only and does not replace the need for land or field survey. The Village of Menomonee Falls makes no representations regarding map accuracy or fitness for any use. This map does not represent an expressed or implied contract with the Village of Menomonee Falls before re-releasing this map or copies of the information displayed on or derived from it.

Source: SEWRPC and Village of Menomonee Falls