



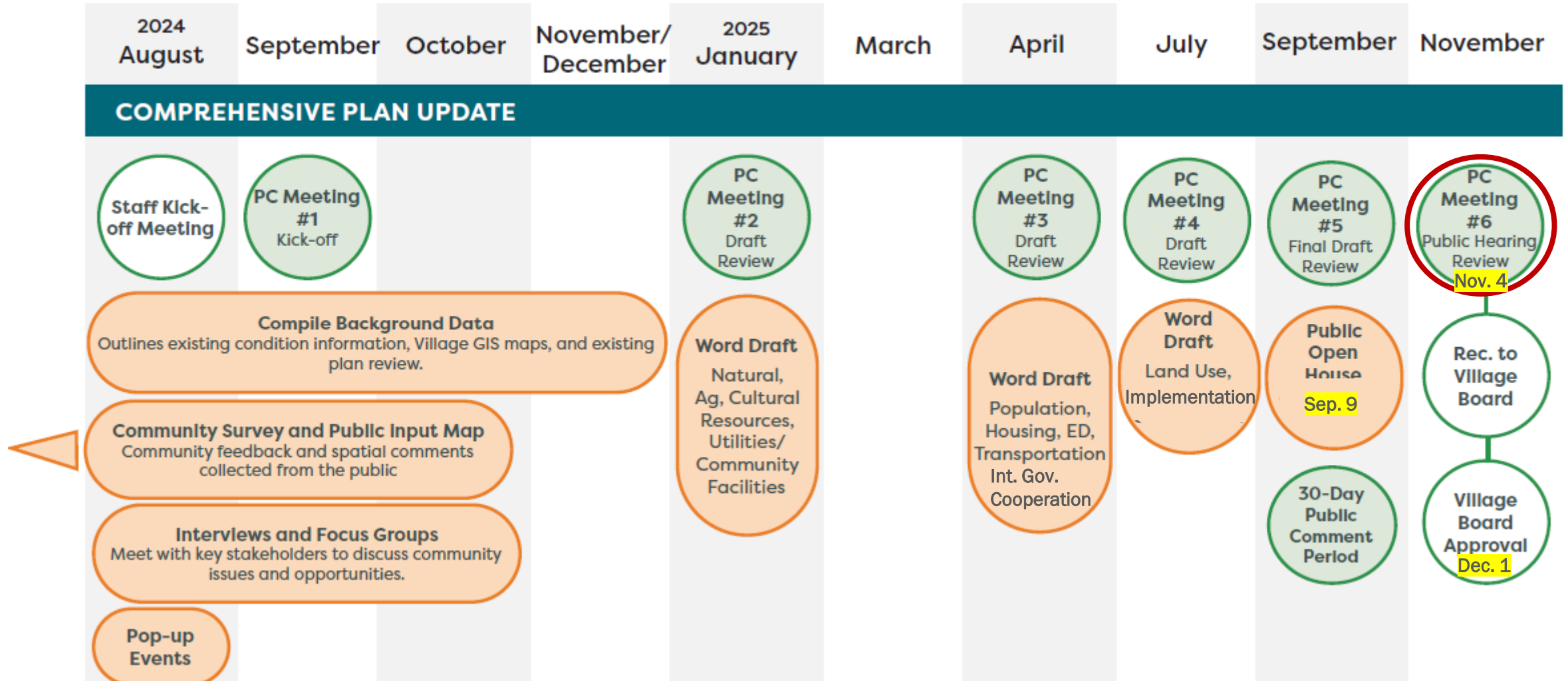
VILLAGE OF
**Menomonee
Falls**

Comprehensive Plan Public Hearing

Village of Menomonee Falls, WI

November 4, 2025

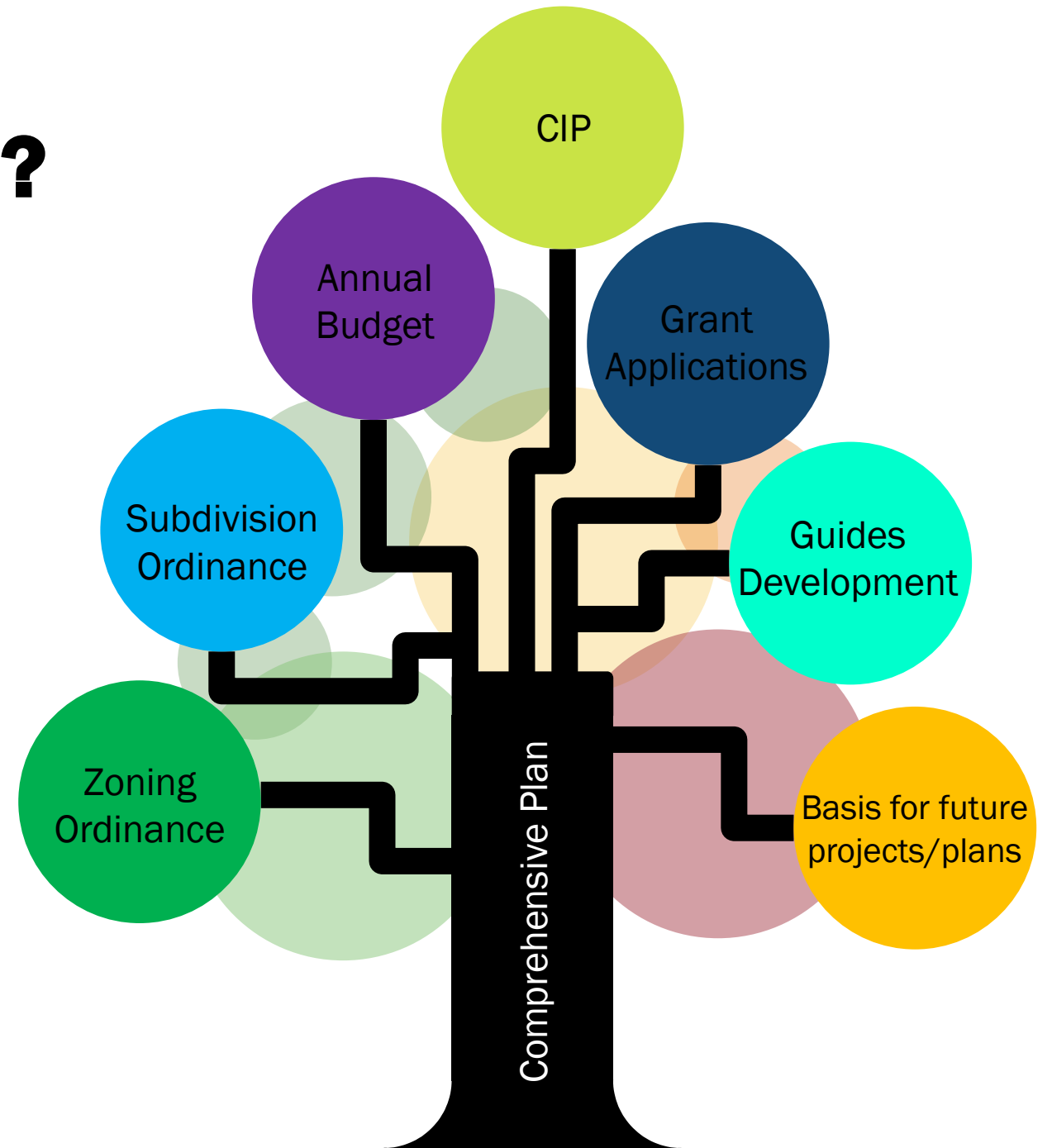
Anticipated Timeline



What is a Comprehensive Plan?

A **Comprehensive Plan** is a guide for the community's physical, social, and economic development.

The **Comprehensive Plan** offers a vision for the future of the City over the next 20 years and helps Village staff and Village officials make budget and land use decisions.



Plan Content

- Feedback from online surveys, community organizations, interviews and focus groups, pop-up booths, public meetings, etc
- Data analysis (e.g. census and Village records)
- Goals and Strategies Statements
- Maps of existing and planned facilities or land uses

The 9 Elements

A comprehensive plan must include AT LEAST all of the nine elements below as defined by the Comprehensive Planning Law:

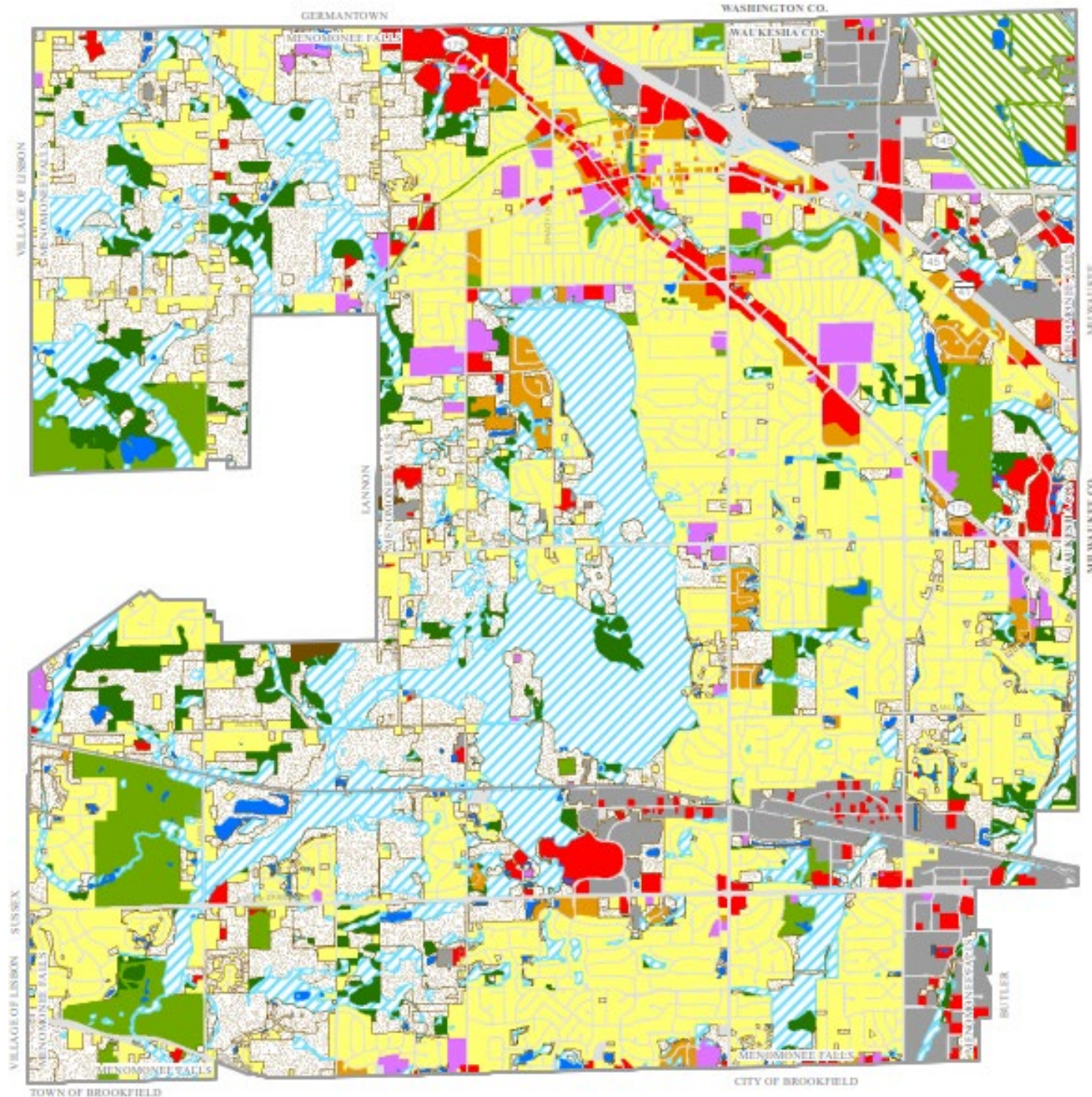
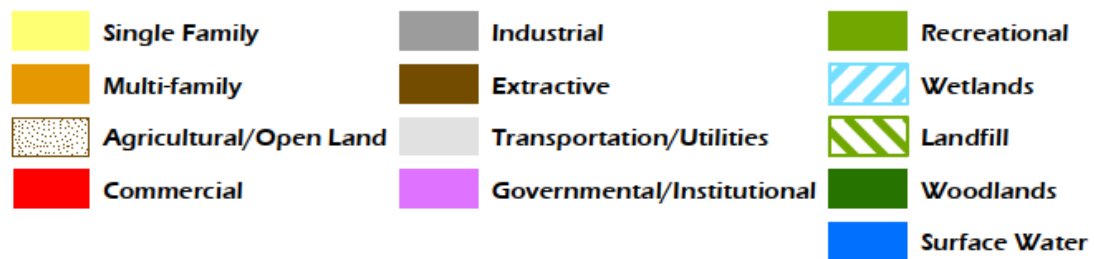
Issues and Opportunities	Housing	Transportation
Utilities and Community Facilities	Agricultural, Natural and Cultural Resources	Economic Development
Intergovernmental Cooperation	Land Use	Implementation

Public Engagement Activities

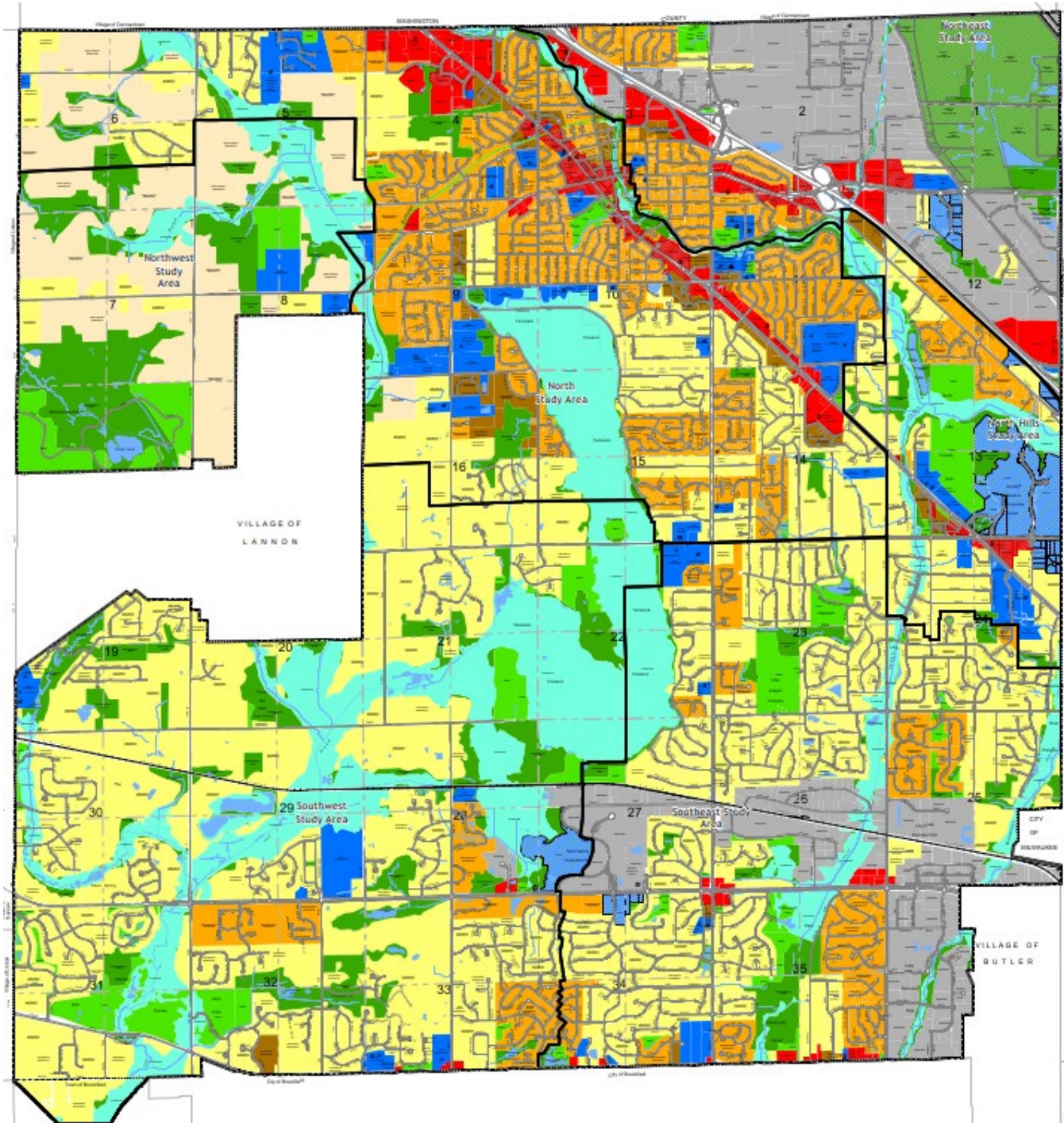
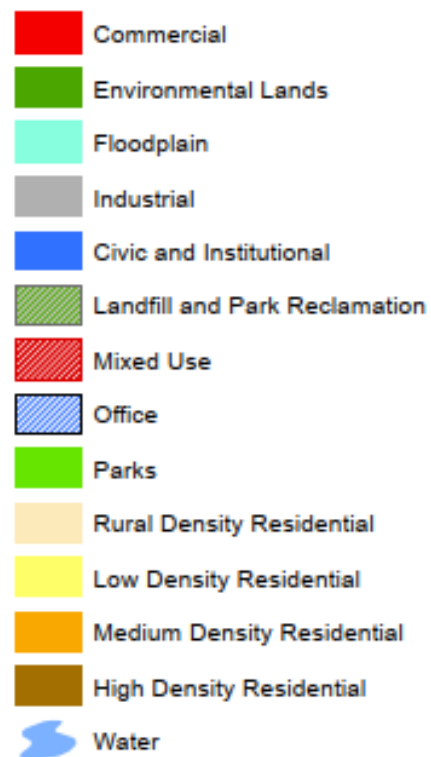
- Community Survey
- Pop-up Booths
 - Farmers' Market
 - Kids' Fest
- Public Interactive Map
- Stakeholder Interview and Focus Groups
- Public Meetings
- **Over 3,500 interactions!**



Existing Land Use Map



Future Land Use Map



Implementation

- Village Board commitment to use the plan and seek consistency with its goals and strategies.
- Direction for key Village committees and Village staff to use this plan routinely to guide decisions, especially Plan Commission.
- Consider preparation of a Comprehensive Plan Annual Report to inform and guide the Village's annual budgeting process.
- More than 100+ strategies to be implemented in the coming years (prioritization by short-term and long-term strategies).
- Guidance for amending and updating the plan in the future.



Thank you! Questions?



Next meeting!

Comp Plan VB Meeting
Monday, December 1st, 2025



Brian Wiedenfeld
bwiedenfeld@msa-ps.com
(414) 285-6693