

MENOMONEE FALLS FIRE DEPARTMENT

# ANNUAL REPORT

---

2021



---

# A MESSAGE FROM THE Menomonee Falls Fire Chief

THE ACCOMPLISHMENTS IN OUR 2021 ANNUAL REPORT ARE A TESTAMENT OF THE EFFORTS OF THE WOMEN AND MEN OF THE MENOMONEE FALLS FIRE DEPARTMENT.

As 2021 began, the Menomonee Falls Fire Department continued to monitor and address the many challenges presented by COVID-19 and its variants. We were tested in how the department responded to emergencies, delivered Community Risk Reduction, and trained personnel. Overcoming these challenges is what the outstanding women and men of the MFFD do every day. This is usually done without fanfare. They believe in the work they do in helping others, during the most difficult times, to make a positive impact.

The mission and vision to continue to deliver the highest quality of service deemed excellent by our customers never wavered. This is a testament to the dedication and professionalism of the women and men of the MFFD. The department responded to a record number of emergency calls in 2021. This challenged the membership unlike any other period in the history of the MFFD. To say that I am in awe of what I witnessed, would truly be an understatement. I want to publicly thank you and your loved ones for your sacrifices.

This annual report will provide valuable information on the MFFD and give you a glimpse of who we are, what we do, and where we are headed. I am humbled and honored to be a part of this amazing department and thank the Village Board of Trustees, Village Manager Mark Fitzgerald, the Police and Fire Commission and the residents of the Villages of Menomonee Falls and Lannon.



**GERARD WASHINGTON**  
FIRE CHIEF



**How can we help?**



## Village Board of Trustees

Dave Glasgow, Village President

Trustee	Seat
Katie Kress	1
Randy Van Alstyne	2
Tim Newman	3
Jeremy Walz	4
Steve Taggart	5
Paul Tadda	6

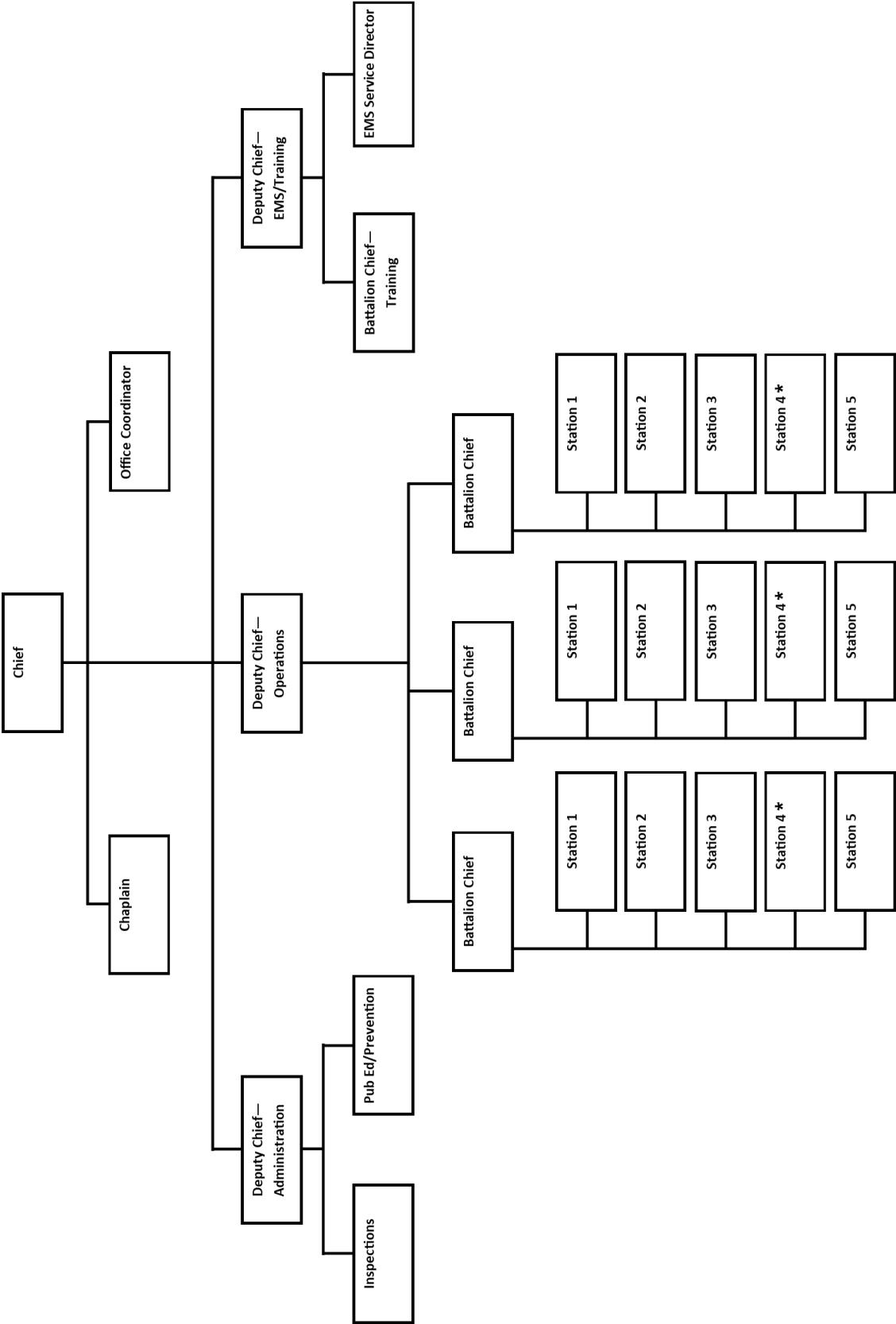
Mark Fitzgerald, **Village Manager**

## Police and Fire Commission

The Police and Fire Commission consists of five citizen Commissioners that are appointed by the Village President. Each year, one person is selected to serve for a five-year term. The Commission is governed by Wisconsin Statute 62.13 that provides them the authority to oversee Police and Fire Department personnel matters.

Name	Seat
Christine Wilczynski-Vogel	Chairperson
Gerry Luisier	Vice Chairperson
Carl Bahneman	Commissioner
Terri Lux	Commissioner
Karen Nelson	Commissioner

# Org Chart



\*Browned out as of May 1, 2021



# Agency Overview

THE MENOMONEE FALLS FIRE DEPARTMENT (MFFD) HAS EXISTED AS A FIRE PROTECTION AGENCY WITHIN THE STATE OF WISCONSIN SINCE 1894.

It serves approximately 40,600 residents within 35.5 square miles, covering the Villages of Menomonee Falls and Lannon, and consists of a mix of urban, suburban, industrial, and wildland areas. The Village of Menomonee Falls is the largest village in the State of Wisconsin, located in Waukesha County.

## Mission

Our mission is to be responsive to the needs of residents of and visitors to the Villages of Menomonee Falls and Lannon.

We will achieve our mission through prevention education, emergency medical services, fire suppression, professional development and emergency preparedness.

We will serve as role models and actively participate in our community to ensure the safety, health and well-being of our residents and customers.

## Vision

We will be innovative, progressive and an engaged organization committed to the highest quality of service which will be deemed excellent by our customers.

## Core values

We believe in being ambassadors for the Villages of Menomonee Falls and Lannon.

We are committed to:

- Honesty and integrity
- Excellent customer service
- Respect for diversity, equity and inclusion

## Motto

How can we help?

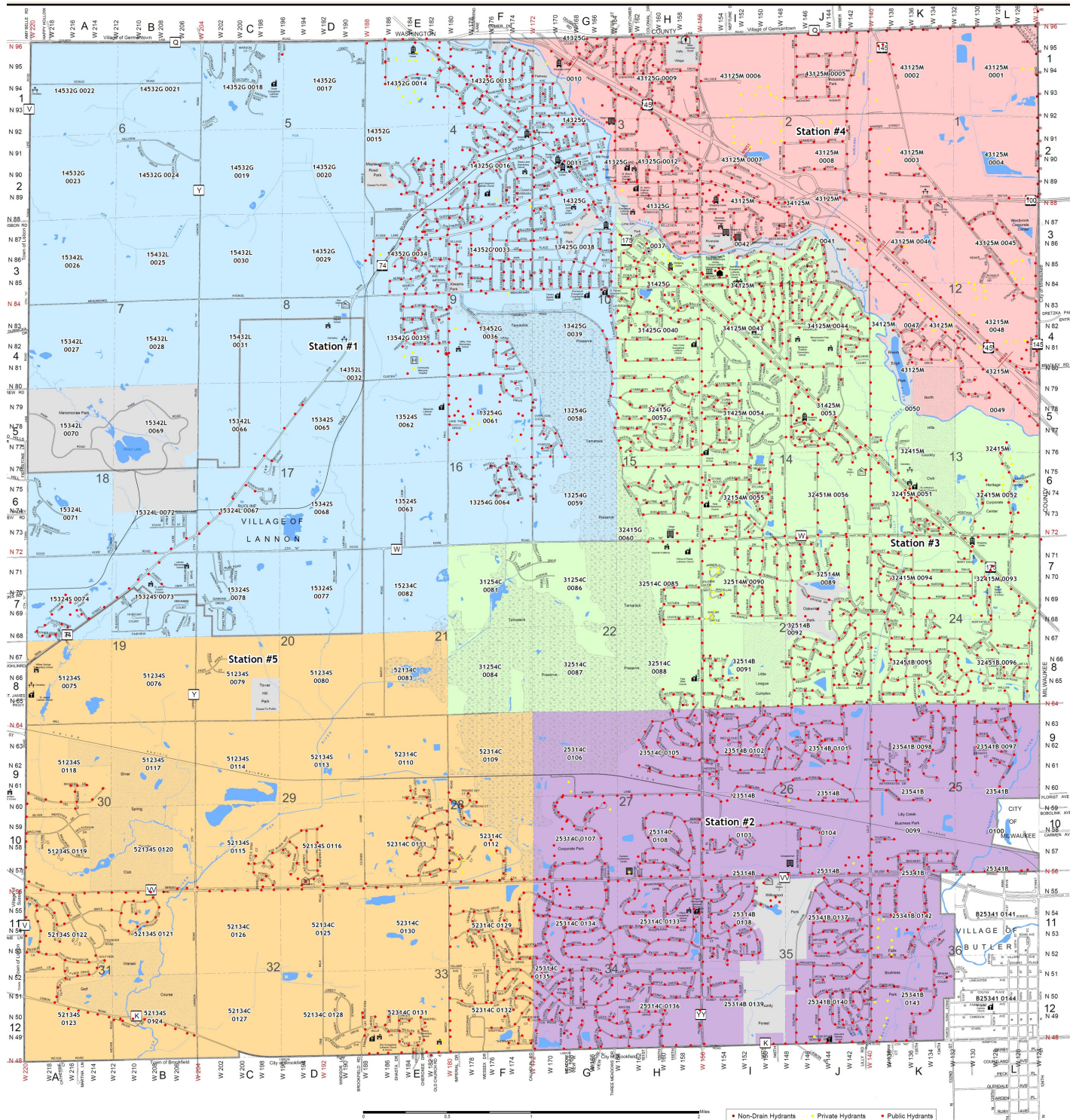
## Diversity, equity and inclusion

The success of the Menomonee Falls Fire Department is dependent upon our ability to recruit, develop, retain and promote motivated, talented and skilled members. To ensure we continue to provide excellent service to the residents of and visitors to the Villages of Menomonee Falls and Lannon it is imperative we recognize the value of diversity, equity and inclusion. We will start with the expectations that all employees will treat each other with dignity and respect, regardless of perceived differences.

Characteristics such as age, culture, gender, ethnicity, race, sexual orientation, religious preference, gender expression and the expression of unique ideas and philosophies provide the opportunity to better understand each other. This understanding will strengthen the productivity of our workforce.



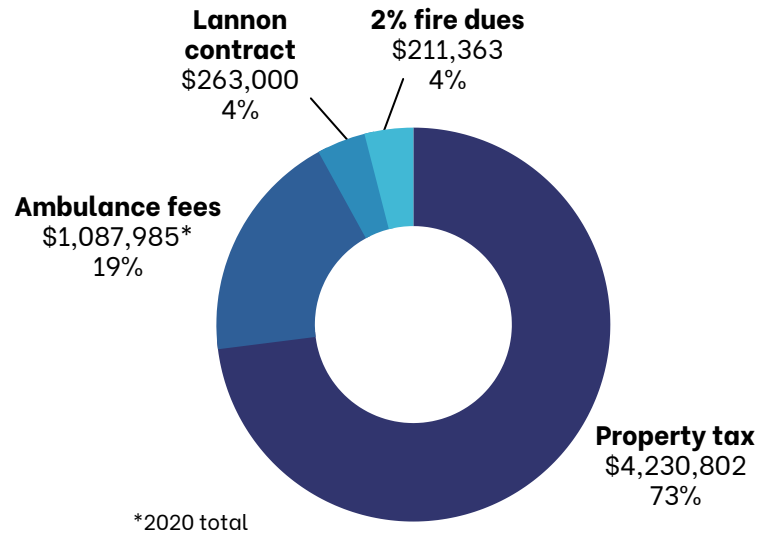
# Response Map



# MFFD's Budget

## Revenues

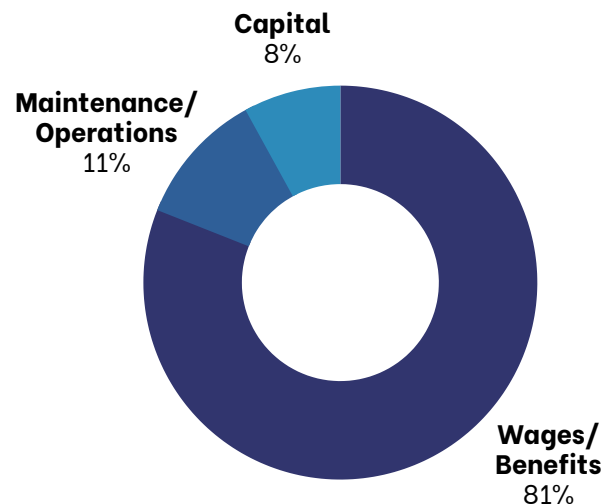
The majority of funding is received from property tax. MFFD also receives funding from fire insurance premiums, known as 2% fire dues, ambulance fees and contract for fire service in Lannon.



## Expense Summary

The MFFD budget is broken into three major categories:

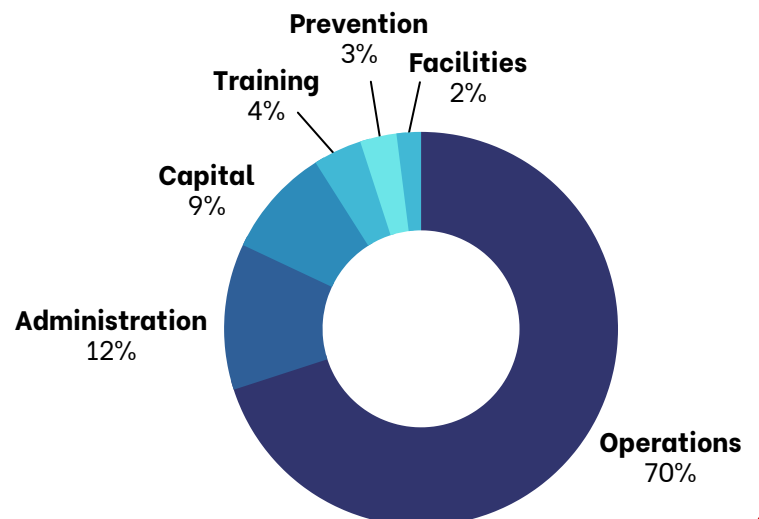
- Wages/Benefits
- Maintenance/Operations (supplies and services)
- Capital (buildings and apparatus)



## Program Expenses

The MFFD budget is broken down to six major divisions:

- Operations (fire suppression/emergency medical services)
- Administration
- Capital
- Training
- Prevention
- Facilities





---

---

# Largest Incident of 2021

In the early afternoon on April 2, tones sounded for a small grass fire. While none of us knew how large the call really was, or how much it would take to mitigate the situation, it soon became apparent.

Responding units were updated with reports of large amounts of smoke and possibly multiple fires. Incident command was established and split into numerous sector commands due to the size of the call.

Initial reports of fire stretched along the railroad tracks from Pilgrim Road to Lannon Road. The businesses on Kohler Lane and homes near Marcy Road and Lannon Road were among the first to call 911. These three distinct areas became the beginning of our response. A northerly 20-plus mile per hour wind would push the fire through the Tamarack Swamp, finally getting contained along Tamarack Trail to the east and Good Hope Road to the north around 9 p.m.

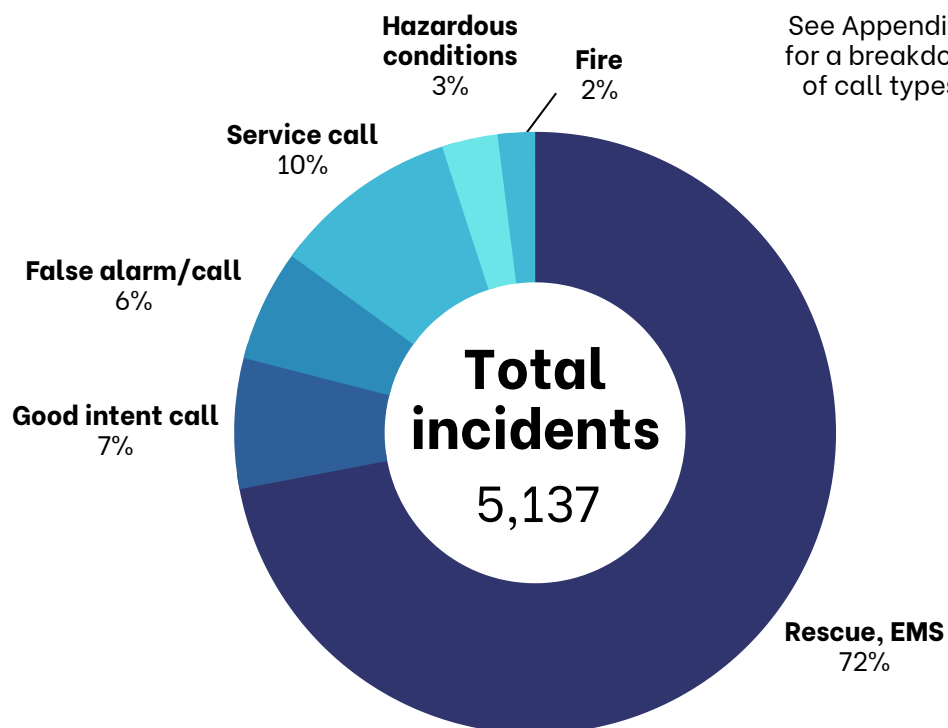
A total of 68 agencies including law enforcement, fire departments, state agencies and the DNR responded to assist. Everyone helped with the final, most important statistics. Zero dollars of fire loss to homes and property. Zero injuries or deaths. This type of low frequency event truly requires an all-hands-on-deck approach to achieve this positive outcome.



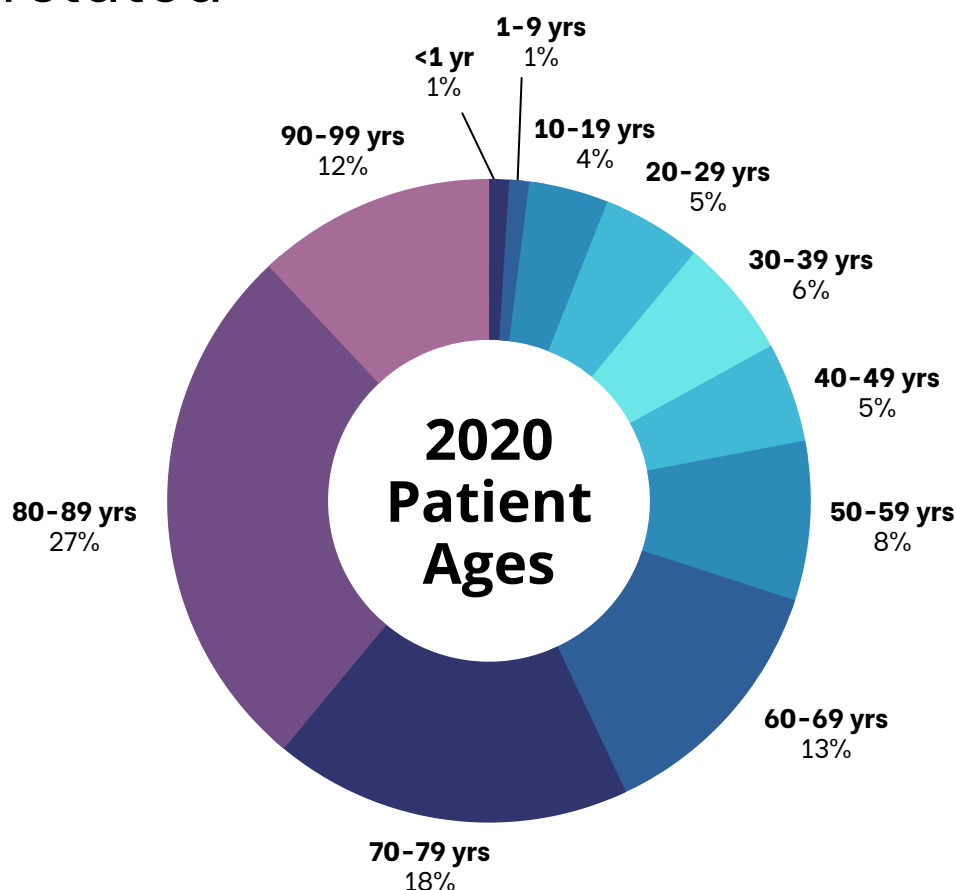


# Response types & volumes

See Appendix A for a breakdown of call types.



**72%**  
of calls are  
EMS related

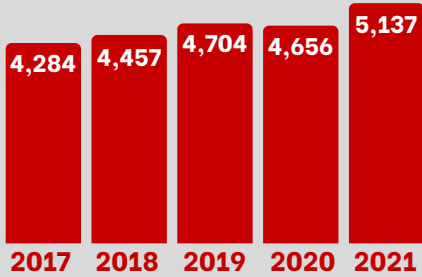




**2017-21**

## Annual calls for service

**↑ 20%**



Between 2017 and 2021, incident call volume increased by 853 emergency calls, or 20%

Menomonee Falls Fire Department was dispatched to

**5,137**

calls in 2021, which resulted in

**10,362**

apparatus responses. That's an average of 14 calls/28 apparatus responses per day.



**2020-21**

## Annual calls for service by apparatus

**↑ 11%**

Apparatus	2020	2021
2751	1570	1702
2761	395	929
2791	6	5
2752	708	925
2762	560	112
2772	0	603
2753	1403	1489
2763	356	1161
2756	74	0
2754	935	153
2764	1186	572
2755	552	215
2765	590	1437
2781	9	5

Total responses for all apparatus, command vehicles and additional specialized apparatus for the full year of 2021 was 10,362 (not all apparatus are listed above). This is up 11% from 2020. More than one apparatus often responds to an emergency call, depending upon the situation. This is why total apparatus responses exceed total calls for service.

See Appendix B for apparatus types and locations.



**2021**

## Mutual aid calls for service

### Aid Given to:

	2020	2021
Butler	3	11
Germantown	118	134

### Aid Received from:

	2020	2021
Butler	67	29
Germantown	116	99

Fire departments routinely provide additional personnel or equipment to neighboring departments through automatic (preplanned) or mutual (requested) aid. This is a reciprocal system with aid both given and received. The MFFD has automatic aid arrangements with both the Butler and Germantown Fire Departments.

### Aid Given to:

	2020	2021
MABAS Div 106	0	1
Other MABAS	4	8

### Aid Received from:

	2020	2021
MABAS	7	12

The Village of Menomonee Falls has participated in the Mutual Aid Box Alarm System (MABAS) since 2006. When a community has exhausted its local resources, MABAS provides additional personnel and equipment. This ranges from firefighters and EMTs to specialized teams and equipment for hazardous materials or technical rescue incidents.

# Prevention & Public Education

MENOMONEE FALLS FIRE DEPARTMENT'S PREVENTION BUREAU FOCUSES ON SAVING LIVES AND PROPERTY BY PREVENTING FIRE AND OTHER EMERGENCIES BEFORE THEY HAPPEN.



2021

Value of building and contents  
saved by MFFD firefighters

95%

## Property

Value	Saved
\$7,440,135	\$7,044,290

In 2021 the MFFD responded to a total of 88 fires, including structures, vehicles, grass and wildland.

## Inspections

The MFFD Inspection Bureau conducts approximately **1,800 semiannual inspections** of commercial, industrial, institutional and multi-family facilities in the Villages of Menomonee Falls and Lannon. The goal of these inspections is to assure the safety of the residents, employees and visitors that occupy these buildings. We also offer home fire inspections by request.

## Fire Investigation

The purpose of fire investigation is to determine the origin and cause of fires. This information can then be used to educate the public about a fire's cause in order to prevent similar fires and to provide an accurate account of what happened.

## Public Education

This is a key to the success of our mission. The MFFD offers education and training to citizens and local businesses including **fire extinguisher use and inspections, CPR, First Aid, senior safety, campus fire safety and installations of smoke alarms (upon request)**. We can also assist with emergency and fire evacuation planning. We are committed to making accommodations to support a diverse range of community members based on each individual's abilities.

Menomonee Falls Fire Department hosted four open houses in 2021 and numerous station tours. These events welcome our community into our fire stations. We also held one **Citizen Fire Academy**, which allows residents to get a behind-the-scenes look at the department and get hands-on experience.

For **Fire Prevention Month in October**, we visited the local schools and daycares to teach our youngest citizens about fire safety. It's also an opportunity for children to ask questions and become more comfortable with firefighters and the work we do.



# Operations

OPERATIONS INVOLVES EMERGENCY RESPONSE AND PREPAREDNESS, DAILY FIRE STATION DUTIES, BUILDING MAINTENANCE, FLEET MANAGEMENT, AND FIREFIGHTING AND RESCUE EQUIPMENT MAINTENANCE.

## Building and Equipment Upgrades

**Personal Protective Equipment (PPE aka turnout gear)** - After researching for the best fit, durability and protective properties, MFFD **purchased 120 complete sets of Fire Dex turnout gear**. A complete set includes a coat, pants with suspenders, turnout boots, gloves, particulate-filtering hood and helmet.

**Station 3 lights** - During the months of February and March every interior lightbulb at Fire Station 3 was replaced with LED bulbs, totaling over 600 bulbs. Station 3 has the largest energy bill of all of the stations, and every bulb we replaced will result in a minimum of 50% cost of energy savings. For many of the bulbs we will see an 80% reduction. There was no additional labor cost to this upgrade, we were able to complete in-house with on-duty personnel.

## New Apparatus

**2772** - In the fall of 2020, MFFD took delivery of 2772, a replacement for the aging aerial ladder truck at Station 2. The new truck is a 100 foot aerial platform that has a working capacity of 1000 pounds dry and 500 pounds while flowing 2000 gallons per minute. It can also operate at 13 degrees below zero while still having a working capacity of 1000 pounds. The ladder truck cost \$1.4 million. The new 2772 was placed into service in the beginning of 2021, following months of driver training on the truck, the first of its kind for MFFD.

**2752** - The newest ambulance was placed in service in November and is similar to our other Paramedic ambulances, with a few small upgrades. It has a 360° camera and rear-view system that allows the driver to see blind spots and behind the vehicle at all times. It also has a privacy system for the windows on the patient compartment, allowing the windows to be made opaque at the push of a button. It currently operates out of Station 2.

**2785** - A 2021 Chevrolet Tahoe SSV outfitted with equipment to meet National Fire Protection Association (NFPA) and Department of Transportation (DOT) specifications to assist our battalion chiefs with emergency scene management. 2785 replaces unit 2786, a 2010 Chevrolet Suburban that will be retained and repurposed as a backup command and utility vehicle.

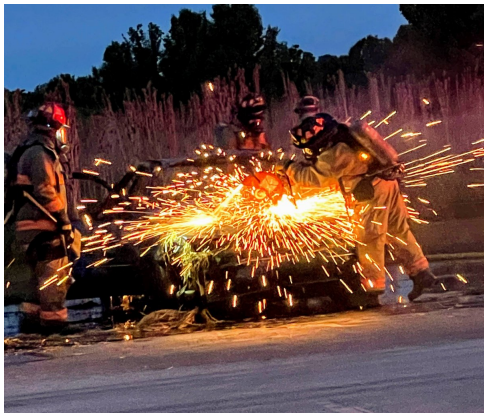




# Training

MENOMONEE FALLS FIREFIGHTERS TRAIN EVERY DAY TO ENSURE THE HIGHEST QUALITY SERVICE TO OUR COMMUNITY. THIS TRAINING IS BASED ON LOCAL, STATE AND NATIONAL STANDARDS.

In 2021, MFFD members **logged over 13,400 hours of training**. This was accomplished through classroom, hands-on and online training. The majority of training is job-specific, related to firefighting, EMS, driving/operating apparatus, and officer development.



**New Aerial Platform** – With the purchase of the department’s first aerial platform, a training program was developed to train and qualify experienced operators. This training consisted of manufacturer-specific training as well as a significant number of hours driving and operating the apparatus. Each operator was required to successfully complete a skill/performance evaluation which included driving the apparatus and operating the aerial platform.

**Vent-Enter-Isolate-Search (VEIS)** – All MFFD firefighters completed VEIS training utilizing the Germantown Fire Department training tower. VEIS is a deliberate tactic for the immediate rescue of a fire victim or potential victim. The skill requires crew coordination, knowledge of building construction, and a full understanding of fire dynamics. When properly executed, VEIS can quickly and safely remove victims and minimize risk to firefighters.

**Training Academies** – MFFD **conducted seven training academies**, bringing a total of 38 new part-time employees on board in 2021. We hire three categories of part-time employees—EMT, Firefighter, and Firefighter/EMT. 2021 marks the first time in over a decade that MFFD hired personnel with a single certification, either EMT or Firefighter. Our diverse department relies on single-certification personnel to support the evolving landscape of the fire service.

**Live Fire**—2021 was the first year in the history of MFFD that we accomplished live fire training for all members of the department. Live fire training is particularly important for departments in smaller communities who infrequently experience structure fires. This training allows our personnel to experience simulated conditions of a structure fire in a controlled environment. This training is an integral component of the MFFD’s emergency preparedness.

## Other Highlights

- Introduced performance standards for firefighters
- Conducted vehicle fire training
- Expanded water rescue capabilities
- Partnered with Kohl’s Corporate for high-rise fire training
- Introduced vehicle lockout passive entry
- Stood up the Safety Committee and Recruitment & Retention Committee

# Emergency Medical Services

MORE COMMONLY KNOWN AS EMS, THE FOCUS IS THE PRE-HOSPITAL EMERGENCY MEDICAL CARE OF THE PATIENT.

**RNs** – The strength of the MFFD is in its diversity. The department expanded its traditional recruitment efforts to target nurses who are interested in working for the MFFD. Nurses bring a unique perspective from the hospital setting that supports continuity of care from the emergency scene to the emergency room. The education and experience nurses have will support future initiatives related to the MFFD's vision statement.

**Community Paramedic (CP) Course** – One RN/EMT and one Firefighter/Paramedic successfully completed the program in August. This program, offered by UWM in partnership with WCTC, serves as the foundational piece of education for individuals who want to work as community paramedics. Community Paramedicine is one of the top initiatives for 2022-23. The objective is to increase access to primary and preventive care and decrease use of emergency departments, which in turn decreases health care costs. CPs are not meant to supersede or replace any healthcare programs that are already available in the community, rather they supplement and enhance these programs.

**CPR for community** – MFFD conducted CPR training for 71 members of the community and Menomonee Falls Police Department in 2021. A recent partnership with Menomonee Falls Community Education and Recreation will provide additional opportunities for community CPR and First Aid.

**LUCAS** – The LUCAS device provides automated high-quality chest compressions when CPR is needed. Use of the LUCAS is proven to lead to a higher survivability rate and better patient outcomes. Two additional devices were purchased to ensure this critical life-saving device is available on every MFFD ambulance.

**Froedtert and Medical College of WI** – Began a partnership with the MFFD to allow future medical directors, known as fellows, the opportunity to ride and observe on a paramedic unit. This experience is vital due to medical directors working closely with fire departments. Medical directors are responsible for and oversee all operations related to EMS.

## Other Highlights

- Upgraded medication/controlled substance vaults, allowing for better security and accountability
- Revised response plan to ensure each call gets the most appropriate resources
- Created a brand new EMS-only training academy
- Outfitted staff and command vehicles with modern EMS bags and equipment





---

---

# Wellness

WHILE OUR MAIN PRIORITY IS TAKING CARE OF OTHERS, WE ALSO NEED TO TAKE CARE OF OURSELVES, BOTH PHYSICALLY AND MENTALLY.

## Peer Fitness

Peer Fitness Training (PFT) has been around for many years in the fire service. Firefighters are often referred to as tactical athletes—like most athletes, they require strength and agility to achieve tactical objectives. The tasks a firefighter may be called upon to do are unique, and the exercises they perform need to match the tasks they may be required to complete.

In addition to building strength and agility, PFT seeks to reduce common and significant injuries. Each workout is designed with these goals in mind and include a warm-up/stretching, stability exercises, functional movements, and a cool-down.

MFFD welcomed PFT in 2021 and supported it with instruction for new trainers and the purchase of equipment for all fire stations. PFT remains a high priority for the department and has been integrated into department culture.

MFFD PFT trainers received education and training from two recognized resources—the International Association of Fire Fighters (IAFF) and Firefighter Dynamic Performance Testing (FD-PT). The IAFF offers their Fit to Thrive program which allows trainers access to practical strategies and resources to improve the physical, psychological and social well-being of a diverse group of firefighters. FD-PT training led by instructor Jordan Ponder gives instructors the knowledge and tools to create workouts, motivate participants, and ensure maximum benefit for all movements.

---

## Peer Support

The Peer Support Team's (PST) primary goal is to provide confidential support and assistance to department personnel suffering from emotional, personal, physical, or stress-related problems. Team members were required to participate in many hours of training, including quarterly continuing education, in order to receive their certifications. The PST is meant to be a liaison service to bridge the gap in connecting people looking for help with people that can assist them. This assistance is available to all department personnel and their families. The MFFD's Peer Support Team officially started January 1, 2021.

*“Reaching out for help is never a sign of weakness, but rather one of strength. It can be intimidating, annoying or frustrating to think about what to do and how to approach overcoming this, but it can be done. You do not have to do it alone. If you cannot reach or maintain all of these goals on your own, contact a peer supporter, medical, provider and /or a psychology professional.”*

—Cody Todd M.A., L.C.P.C. FPS Therapist



## Comfort Dog

Comfort dogs support mental health by providing attention and comfort. Their sweet demeanors and unconditional love have a therapeutic benefit to those who face difficult challenges.

MFFD has been visited by Charity, a Golden Retriever trained to be a friend who brings a calming presence and to interact with people of all ages and circumstances.

# WCC Dispatch

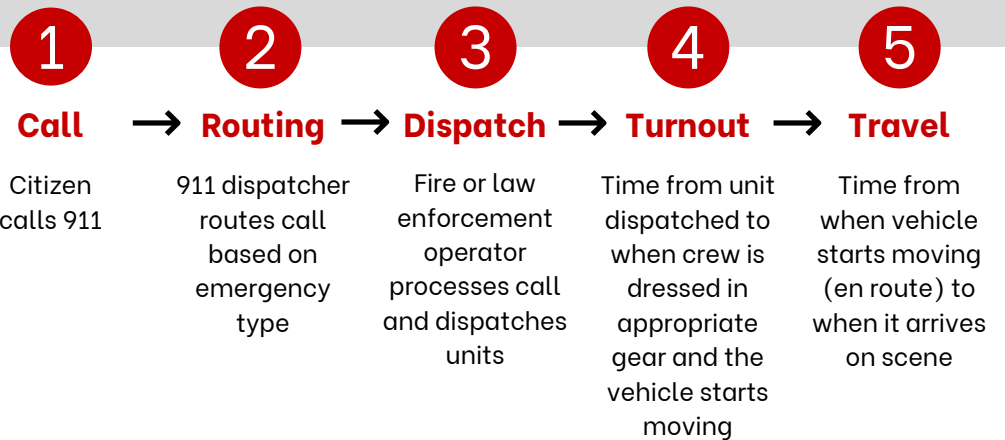
The Menomonee Falls Fire Department is dispatched by Waukesha County Communications Center (WCC). WCC is located in the City of Waukesha and dispatches and handles radio communications for 19 police departments and 18 fire departments. WCC is also the primary dispatch center for Division 106 (Waukesha County) of the Mutual Aid Box Alarm System (MABAS). WCC dispatchers are trained in CPR, and Emergency Medical Dispatch (EMD) and Emergency Fire Dispatch (EFD) via The International Academies of Emergency Dispatch.



## Emergency Response Times

In Menomonee Falls, all 911 calls are answered by dispatchers at Waukesha County Communications who dispatch units appropriate for the type of emergency.

## Anatomy of a 911 call





# Staff

## Administration

Name	Rank	Years of Service
Gerard Washington	Fire Chief	1.5
Nicholas Boehlke	Deputy Chief - Training/EMS	3.9
Kevin Rokenbrodt	Deputy Chief - Operations	22.6
Don Umhoefer	Deputy Chief - Administration	40.1
Kurt Harthun	Battalion Chief	4.5
Jared Klug	Battalion Chief	12.6
Rae Ann Schone	Battalion Chief	13.6
Jessi Coon	Office Coordinator	14.4
Russell Knoth	Chaplain*	11.3
Kevin Porter	Auxiliary*	7.3
Randy Garrett	Inspector*	38.3
Jesse Holmes	Inspector*	11.4
Larry Jenkins	Inspector*	0.7
Duane Kantowski	Inspector*	0.7
Doug Mueller	Inspector*	31.8
Joe Virnig	Inspector*	17.0

\*Part-time

## Full-time

Name	Rank	Years of Service
Ed Burg	Lieutenant/Paramedic	7.8
Kevin Myers	Lieutenant/Paramedic	13.2
Cody Porter	Lieutenant/Paramedic	7.8
Steven Schmitz	Lieutenant/Paramedic	21.6
Joe Waite	Lieutenant/Paramedic	11.2
Brent Biedenbender	Lieutenant/AEMT	22.3
Dale Rome	Lieutenant/AEMT	12.6
Nichole Dorvinen	Firefighter/Paramedic	8.2
Sean Foley	Firefighter/Paramedic	10.5
Nick Hepner	Firefighter/Paramedic	8.4
Josh Hutwagner	Firefighter/Paramedic	10.7
Joe Jankowski	Firefighter/Paramedic	4.5
Aaron Martinez	Firefighter/Paramedic	4.5
Gabe Norton	Firefighter/Paramedic	7.6
John Schut	Firefighter/Paramedic	4.5
Nick Coon	Firefighter/AEMT	22.3
Brandon Kais	Firefighter/AEMT	4.5
Aaron Koepke	Firefighter/AEMT	20.9
Steve Rehse	Firefighter/AEMT	18.6
Dan Schroettner	Firefighter/AEMT	5.8

# Staff

## Part-Time

Name	Rank	Years of Service		Rank	Years of Service
Todd Dettmering	Lieutenant/Paramedic	33.7	Jeff Mason	Firefighter/EMT	0.7
Joe Ostrosky	Lieutenant/Paramedic	16.3	Eli Ornstein	Firefighter/EMT	0.7
Rico Bishop	Lieutenant/AEMT	10.1	April Schuermann	Firefighter/EMT	0.7
Lucas Albertson	Firefighter/Paramedic	3.5	Anchal Scott	Firefighter/EMT	1.0
Dan Corbin	Firefighter/Paramedic	3.1	Kurt Smith	Firefighter/EMT	23.2
Alie Velcheck	Firefighter/Paramedic	0.5	Chuck Zielke	Firefighter/EMT	0.5
Tyler Anders	Firefighter/AEMT	1.1	Nicki Porter	RN/Paramedic	10.0
Joe Butts	Firefighter/AEMT	1.1	Jamie Bohacek	RN/AEMT	0.7
Jim Creegan	Firefighter/AEMT	0.7	Nate Saltzman	RN/AEMT	1.0
Jerry Erjavec	Firefighter/AEMT	11.2	Jenna Schwechel	RN/AEMT	0.5
Taylor Knaebe	Firefighter/AEMT	3.1	Rachel Bower	Paramedic	0.5
Kory Mueller	Firefighter/AEMT	2.1	Julie Wagner	Paramedic	12.6
Brandon Mumm	Firefighter/AEMT	1.4	Wendy Osborne	AEMT	8.4
Chris Piette	Firefighter/AEMT	1.1	Lisa Ulicki	AEMT	13.0
Jeff Plewa	Firefighter/AEMT	0.7	Breanna Adams	EMT	0.2
Greg Schneider	Firefighter/AEMT	12.6	Andrea Alvarez	EMT	0.7
Josh Szentes	Firefighter/AEMT	8.3	Darold Badora	EMT	0.3
Benjamin Todd	Firefighter/AEMT	1.1	Abigail Fritz	EMT	0.1
Evan Arberry	Firefighter/EMT	0.2	Tanner Goodchild	EMT	0.3
Drake Barczak	Firefighter/EMT	1.4	Heather Gunderson	EMT	8.2
Quincy Beeks	Firefighter/EMT	0.7	Anthony Harmon	EMT	0.2
Emilio Cerda	Firefighter/EMT	2.1	Rebeca Juarez	EMT	0.7
Donavon Church	Firefighter/EMT	1.0	Collin Kennedy	EMT	0.1
Brad Clemetson	Firefighter/EMT	1.1	Gavin Mantyh	EMT	0.2
William Curtis	Firefighter/EMT	1.1	Jessica Wolfe	EMT	0.3
Paul Griffin	Firefighter/EMT	1.0	Adam Ewig	Firefighter	7.8
Midou Gueye	Firefighter/EMT	0.7	Devin Godager	Firefighter	0.7
Camron Hepp	Firefighter/EMT	7.8	Matt Medrow	Firefighter	11.6
Paul Krueger	Firefighter/EMT	1.0	Dan Neary	Firefighter	11.2
Bob Marki	Firefighter/EMT	13.2			



---

---

# Appendix A

MFFD incidents are broken down into six major categories. Below are examples of what each category consists of.

## False alarm/calls

- Sprinkler activation due to malfunction or unintentional
- Smoke detector activation due to malfunction or unintentional
- Alarm system sounded due to malfunction or unintentional
- CO detector activation due to malfunction or unintentional
- Unintentional transmission of alarm

## Fire

- Building fire
- Cooking fire
- Brush or grass fire
- Vehicle fire
- Trash or rubbish fire
- Garbage dump or sanitary landfill fire
- Dumpster or other outside trash receptacle fire
- Outside equipment fire

## Good intent calls

- Dispatched & cancelled en route
- No incident found on arrival
- Authorized controlled burning
- Smoke scare, odor of smoke
- Steam, vapor, fog or dust thought to be smoke

## Hazardous conditions

- Gasoline or other flammable liquid spill
- Gas leak
- Chemical spill or leak
- Carbon monoxide incident
- Electrical wiring/equipment problem
- Power line down
- Arcing, shorted electrical equipment

## Rescue, EMS

- Emergency medical calls
- Motor vehicle accident
- Extrication
- Removal of victim from stalled elevator
- Confined space rescue
- Water & ice-related rescue
- Swimming/recreational water areas rescue
- Ice rescue
- Electrocuting or potential electrocution

## Service calls

- Lock-out
- Ring or jewelry removal
- Animal rescue
- Lift assist
- Severe weather

# Appendix B

Unit #	Type	Location
2751	Ambulance	Station 1
2761	Engine	Station 1
2791	Tender	Station 1
2752	Ambulance	Station 2
2762	Engine	Station 2
2772	Truck	Station 2
2753	Ambulance	Station 3
2763	Engine	Station 3
2756	Reserve Ambulance	Station 3
2754	Ambulance	Station 4*
2764	Engine	Station 4*
2755	Ambulance	Station 5
2765	Engine	Station 5
2781	Mini-Pumper	Station 5

\*Moved to Station 1 as of May 1, 2021





Menomonee Falls Fire Department  
W140N7501 Lilly Rd  
Menomonee Falls, WI 53051  
(262) 532-8800  
[www.menomonee-falls.org/fire](http://www.menomonee-falls.org/fire)



Find us on Facebook  
@MenomoneeFallsFireDept