



Village of Menomonee Falls
 W156 N8480 Pilgrim Road
 Menomonee Falls, WI 53051-3140
 Telephone: (262) 532-4200

STORMWATER MANAGEMENT FACILITIES OPERATION AND INSPECTION REPORT

Quarter Section 15 NE Name of Business/Subdivision HUNTER'S RIDGE ESTATES
 Property Tax ID Number 0057158 Address of Property _____

Dry Pond	X
Wet Pond	
Other	

Description: SWP15N005
P-0065B, U-0261

Location Of Pond SOUTHWEST OF
PILGRIM RD &
COUNTRYSIDE DR

Year Pond Constructed 1987 Year of Last Certification 2008

Compliance Verification	Design (Non-AsBuilt)	Actual (GPS)	Compliant		Comments (Condition of Structure)
			Yes	No	
Primary Outlet Pipe (IN15N005)					Outlet Pipe Material
Opening Diameter (inches)	18" RCP	18" RCP	-	-	18" RCP IN GOOD CONDITION, REPAIR GAP/SMALL SINK HOLE @ JOINT
Upstream Invert	837.50	837.62	-	-	
Downstream Invert	837.50	837.00	-	-	
Length (feet)	54.0 FT	56.2 FT	-	-	
Slope (%)	0.0024',	0.0110',	-	-	
					ELEVATIONS TO VARY SLIGHTLY FROM YEAR TO YEAR DUE TO GPS TECHNOLOGY
Secondary Outlet Pipe	N/A				Outlet Pipe Material
Opening Diameter (inches) (IN15N006)	15" RCP	15" RCP	-	-	15" RCP IN GOOD CONDITION
Upstream Invert	837.50	837.59	-	-	
Downstream Invert	837.50	837.20	-	-	
Length (feet)	6.0 FT	6.3 FT	-	-	
Slope (%)	0.0000',	0.0622',	-	-	
Riser	N/A				Riser Material
Opening Diameter (inches)					
Elevation					
Upper Discharge Control	N/A				
Opening Diameter (inches)					
Elevation					

Compliance Verification	Design	Actual	Compliant		Comments	
			Yes	No		
Lower Discharge Control	N/A					
Opening Diameter (inches)						
Elevation						
Other (Description)	N/A					
Opening Type and Size (inches)						
Elevation						
Emergency Spillway						
Elevation	842.00	841.61				
Length of spillway (feet)	10.0 FT	3.2 FT				
Embankment	Present Yes No		Comments/Maintenance Requirements			
Unauthorized Plantings, trees, or woody vegetation	-	N	1) REPAIR JOINT GAP/SINK HOLE @ OUTLET PIPE 2) REMOVE DEBRIS FROM CONCRETE CHANNEL			
Animal burrows or slope erosion or hole	Y	-				
Storm Sewer Outfalls	Type & Size		Location		Comments	
Outfall 1 (OT15N016)	RCP - 36"		NORTHWESTERLY EMBANKMENT		RCP IN GOOD CONDITION	
Outfall 2						
Outfall 3						
Storage Properties	Design (NON-ASBUILT)	Actual (GPS)	Compliant Yes No		Not Applicable	Equipment Used
Normal Water Elevation (Wet Ponds)	-	-	-	-	N/A	GPS EQUIPMENT: SOKKIA GSR2700ISX & CARLSON SURVEYOR+ WITH SURV CE v1.7
Design High Water Elevation	842.00	841.60				
Area at Normal Water Elevation (Ac) (Wet Ponds)	-	-	-	-	N/A	
Area at Design High Water Elevation (Ac)	-	0.645 AC				
Active Storage Available (Ac-Ft)*	-	2.030 ACFT				
Lowest Elevation at Top of Embankment (If Applicable)	842.00	841.61				
Average Elevation at Top of Embankment (If Applicable)	844.00	843.75				
Maximum Bottom Elevation	842.00	841.59				
Average Pond Bottom Elevation	838.50	839.00				
Pond Bottom Area (Ac)	-	0.581 AC				
Maximum Pond Depth	4.5 FT	6.1 FT				
Average Pond Depth	4.0 FT	2.6 FT				
Average Permanent Pool Depth (Wet Ponds)	-	-	-	-	N/A	

*To Determine Active Storage $V = \left(\left(\frac{H}{3} \right) \left(A1 + A2 + \left(\left(A1 + A2 \right)^{\left(\frac{1}{2} \right)} \right) \right) \right)$

Wet Ponds Use $H =$ Height of Section, $A1 =$ area at normal water elevation, $A2 =$ area at top section

Dry Ponds Use $H =$ Height of Section, $A1 =$ pond bottom area, $A2 =$ area at top section

Hunter's Ridge Estates (Pilgrim Rd & Countryside)
Retention Pond - SWP15N005

Overview



OT15N016



Hunter's Ridge Estates (Pilgrim Rd & Countryside)
Retention Pond - SWP15N005

IN15N005, YB15N024, & Emergency Spillway



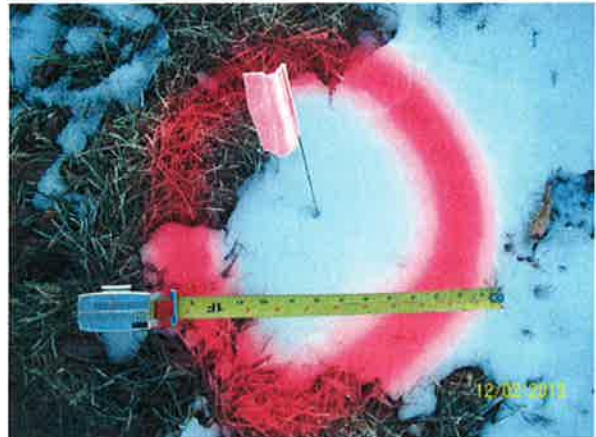
Emergency Spillway Inlet IN15N006



Hunter's Ridge Estates (Pilgrim Rd & Countryside) Retention Pond - SWP15N005

Repairs Needed (12/2013)

- 1) Fix top of RCP
- 2) Fill Sink Hole



- 2) Remove Gravel, Grass, Leaves form Concrete Channel



Sketch Outlet

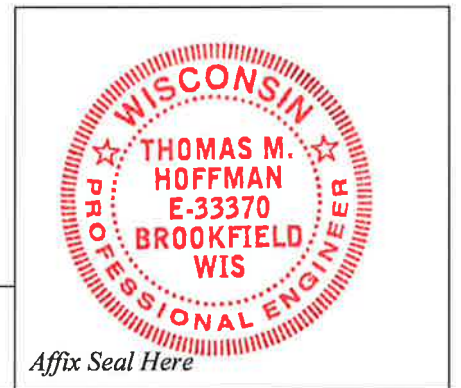
Place Photograph of Pond

Place Photograph of Pond

Inspection Firm: VILLAGE OF
MENOMONEE FALLS
 Phone Number: 262-532-4411
 Address: W156N8480 PILGRIM RD
MENOMONEE FALLS, WI
53051

Inspector Name : CHRISTOPHER M GARIEPY
 Inspection Date: 11/7/2013

Certifying
 Professional Name: Thomas M Hoffman
 Phone Number: 262-532-4415



Date: 7/23/2014

Signature: Thomas M Hoffman

$$H = 84.61 - 839.00 = 2.61'$$

$$A_1 = 25,299.8 \text{ SF} \left(\frac{\text{AC}}{43,580 \text{ SF}} \right) = 0.5808 \text{ AC}$$

$$A_2 = \frac{41,130.6 \text{ SF}}{28,104.9 \text{ SF}} \left(\frac{\text{AC}}{43,580 \text{ SF}} \right) = \frac{0.9492 \text{ AC}}{0.6452 \text{ AC}}$$

Regiment + Countywide Parcel

2013
152005

CONTOUR LINES

$$V = \left(\frac{H}{3} \right) (A_1 + A_2 + \sqrt{A_1 A_2})$$

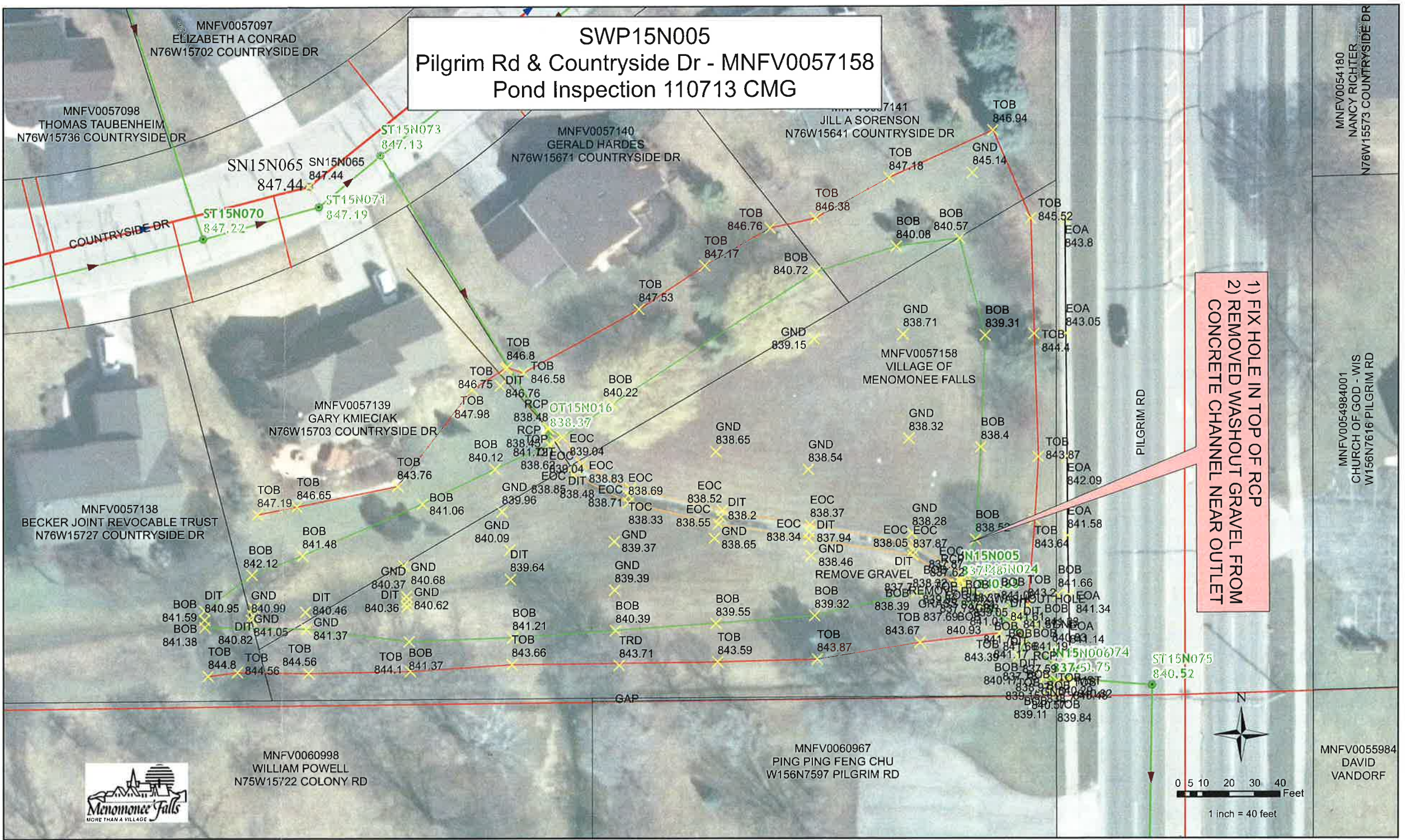
$$V = \left(\frac{2.61'}{3} \right) \left(0.5808 \text{ AC} + 0.6452 \text{ AC} + \sqrt{0.5808 \cdot 0.6452 \text{ AC}} \right)$$

$$V = (0.87 \text{ FT}) (1.226 \text{ AC} + \sqrt{1.226 \text{ AC}})$$

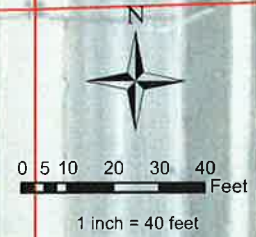
$$V = (0.87 \text{ FT}) (2.333 \text{ AC})$$

$$V = 2.030 \text{ AC FT}$$

SWP15N005
Pilgrim Rd & Countryside Dr - MNFV0057158
Pond Inspection 110713 CMG



1) FIX HOLE IN TOP OF RCP
 2) REMOVED WASHOUT GRAVEL FROM
 CONCRETE CHANNEL NEAR OUTLET



MNFV0060998
 WILLIAM POWELL
 N75W15722 COLONY RD

MNFV0060967
 PING PING FENG CHU
 W156N7597 PILGRIM RD

MNFV0055984
 DAVID
 VANDORF

MNFV0057098
 THOMAS TAUBENHEIM
 N76W15736 COUNTRYSIDE DR

MNFV0057138
 BECKER JOINT REVOCABLE TRUST
 N76W15727 COUNTRYSIDE DR

MNFV0057139
 GARY KMIECIAK
 N76W15703 COUNTRYSIDE DR

MNFV0057140
 GERALD HARDES
 N76W15671 COUNTRYSIDE DR

MNFV0057141
 JILL A SORENSON
 N76W15641 COUNTRYSIDE DR

MNFV0054180
 NANCY RICHTER
 N76W15573 COUNTRYSIDE DR

MNFV0054984001
 CHURCH OF GOD - WIS
 W156N7616 PILGRIM RD

SN15N065
 847.44

ST15N070
 847.22

ST15N073
 847.13

ST15N071
 847.19

TOB
 846.94

TOB
 847.18

GND
 845.14

TOB
 846.38

TOB
 847.17

BOB
 840.72

TOB
 847.53

GND
 838.71

BOB
 840.08

BOB
 840.57

TOB
 845.52

EOA
 843.8

EOA
 843.05

TOB
 844.4

TOB
 846.8

TOB
 846.75

TOB
 847.98

TOB
 847.98

BOB
 840.12

BOB
 840.12

BOB
 840.12

BOB
 840.12

BOB
 840.12

BOB
 840.12

BOB
 840.12

BOB
 840.12

BOB
 840.12

BOB
 840.12

BOB
 840.12

BOB
 840.12

BOB
 840.12

BOB
 840.12

BOB
 840.12

BOB
 840.12

BOB
 840.12

BOB
 840.12

BOB
 840.12

BOB
 840.12

BOB
 840.12

BOB
 840.12

BOB
 840.12

GAP

GND
 838.65

GND
 838.54

GND
 838.32

GND
 838.32

GND
 838.32

GND
 838.32

GND
 838.32

GND
 838.32

GND
 838.32

GND
 838.32

GND
 838.32

GND
 838.32

GND
 838.32

GND
 838.32

GND
 838.32

GND
 838.32

GND
 838.32

GND
 838.32

GND
 838.32

GND
 838.32

GND
 838.32

GND
 838.32

GND
 838.32

GND
 838.32

GND
 838.32

GND
 838.32

GND
 838.32

GND
 838.32

GND
 838.32

GND
 838.32

GND
 838.32

GND
 838.32

GND
 838.32

GND
 838.32

GND
 838.32

GND
 838.32

GND
 838.32

GND
 838.32

GND
 838.32

GND
 838.32

GND
 838.32

GND
 838.32

GND
 838.32

GND
 838.32

GND
 838.32

GND
 838.32

GND
 838.32

BOB
 838.4

BOB
 838.4

BOB
 838.4

BOB
 838.4

BOB
 838.4

BOB
 838.4

BOB
 838.4

BOB
 838.4

BOB
 838.4

BOB
 838.4

BOB
 838.4

BOB
 838.4

BOB
 838.4

BOB
 838.4

BOB
 838.4

BOB
 838.4

PILGRIM RD

PILGRIM RD

PILGRIM RD

PILGRIM RD

PILGRIM RD

PILGRIM RD

PILGRIM RD

PILGRIM RD

PILGRIM RD

PILGRIM RD

PILGRIM RD

PILGRIM RD

PILGRIM RD

PILGRIM RD

PILGRIM RD

PILGRIM RD

PILGRIM RD

PILGRIM RD

PILGRIM RD

PILGRIM RD

PILGRIM RD

PILGRIM RD

PILGRIM RD

PILGRIM RD

PILGRIM RD

PILGRIM RD

PILGRIM RD

PILGRIM RD

PILGRIM RD

PILGRIM RD

PILGRIM RD

PILGRIM RD

PILGRIM RD

PILGRIM RD

PILGRIM RD

PILGRIM RD

PILGRIM RD

PILGRIM RD

PILGRIM RD

PILGRIM RD

PILGRIM RD

PILGRIM RD

PILGRIM RD

PILGRIM RD

PILGRIM RD

PILGRIM RD

PILGRIM RD

PILGRIM RD

PILGRIM RD

PILGRIM RD

PILGRIM RD

PILGRIM RD

PILGRIM RD

PILGRIM RD

PILGRIM RD

PILGRIM RD

PILGRIM RD

PILGRIM RD

PILGRIM RD

PILGRIM RD

PILGRIM RD

PILGRIM RD

PILGRIM RD

PILGRIM RD

PILGRIM RD

PILGRIM RD

PILGRIM RD

PILGRIM RD

PILGRIM RD

PILGRIM RD

PILGRIM RD

PILGRIM RD

PILGRIM RD

PILGRIM RD

PILGRIM RD

PILGRIM RD

PILGRIM RD

PILGRIM RD

PILGRIM RD

PILGRIM RD

PILGRIM RD

PILGRIM RD

PILGRIM RD

PILGRIM RD

PILGRIM RD

PILGRIM RD

PILGRIM RD

PILGRIM RD

PILGRIM RD

PILGRIM RD

PILGRIM RD

PILGRIM RD

PILGRIM RD

PILGRIM RD

PILGRIM RD

PILGRIM RD

PILGRIM RD

PILGRIM RD

PILGRIM RD

PILGRIM RD

PILGRIM RD

PILGRIM RD

PILGRIM RD

PILGRIM RD

PILGRIM RD

PILGRIM RD

PILGRIM RD

PILGRIM RD

PILGRIM RD

PILGRIM RD

PILGRIM RD

PILGRIM RD

PILGRIM RD

PILGRIM RD

PILGRIM RD

PILGRIM RD

PILGRIM RD

PILGRIM RD

PILGRIM RD

PILGRIM RD

PILGRIM RD

PILGRIM RD

PILGRIM RD

PILGRIM RD

PILGRIM RD

PILGRIM RD

PILGRIM RD

PILGRIM RD

PILGRIM RD

PILGRIM RD

PILGRIM RD

PILGRIM RD

PILGRIM RD

PILGRIM RD

PILGRIM RD

847.75

SWP15N005 COUNTRYSIDE & PILGRIM

2013
GPS

MNFV 0057158

*Localize By
MHS*

①
SN15N063
N 427,452.43
E 2,505,597.77
Z 847.15

11/7/13

40' W RCP

1.25' AS SORN

②
SN15N064
N 427,274.42
E 2,505,674.18
Z 845.87

③
SN15N065
N 427,137.61
E 2,505,502.12
Z 847.44

⑤
SN15N067
N 427,132.29
E 2,505,245.48
Z 846.02

④
SN015N066
N 427,105.42
E 2,505,374.15
Z 846.81

848.08

40' e/c



12" RCP