

The Current

Winter 2020-2021

VILLAGE OF
Menomonee Falls

**Check out the
New Village Park**
page 3

INSIDE THIS ISSUE

- p **1** Being a **village** when it matters most
- p **5** Construction & development updates
- p **8** Election information and other reminders for 2021
- p **10** MFPD on our winter driving wonderland
- p **11** A primer on chimney fire safety
- p **16** Out and about seasonal photo gallery

**2021 Operating
Budget Overview**
page 7

**Library Corner:
2021 BIG READ**
page 9

**Ring in the New Year
with CE & Rec**
page 14

VILLAGE HALL

W156 N8480 Pilgrim Road
Menomonee Falls, WI 53051-3140

262-532-4200

Monday - Friday
8:00 am - 4:30 pm

Offices Closed
Christmas

12/24/20 & 12/25/20

New Years Day
1/1/21

VILLAGE BOARD

President Dave Glasgow

trusteeglasgow@menomonee-falls.org

Trustee Katie Kress

trusteekress@menomonee-falls.org

Trustee Tim Newman

trusteetnewman@menomonee-falls.org

Trustee Paul Tadda

trusteetadda@menomonee-falls.org

Trustee Steve Taggart

trusteetaggart@menomonee-falls.org

Trustee Randy Van Alstyne

trusteevanalstyne@menomonee-falls.org

Trustee Jeremy Walz

trusteewalz@menomonee-falls.org

QUICK CONTACTS

Village Manager.....532-4240
Public Works.....532-4700
Protective Services Business Office....532-8700
Protective Services Non-Emergency..446-5070
Clerk Services.....532-4200
Engineering & Development.....532-4400
Building Inspector.....532-4282



Being a Village When it Matters Most

On more than one occasion since the Village was established in 1892, the community has considered incorporating as a city. In 1964, the issue even went to a referendum with residents voting to retain our Village status. Today, many people continue to emphasize the importance of maintaining Menomonee Falls' village character and feel.

So what does it mean to be a Village in 2020?

For the Village organization, it means we remain committed to providing you effective and responsive services notwithstanding challenges brought by winter and our ongoing public health emergency. It means you can count on us to efficiently clear roads, respond to service calls in a timely manner, uphold standards of the Municipal Code, and provide outstanding emergency services. We will continue to work hard to model what it means to meet the needs of the public.

For residents and businesses, being a Village means doing our part to contribute to community well-being and to meet the needs of neighbors. Help our community this season by following public health guidance, supporting local businesses, donating to serve those in need, and volunteering time and energy in support of seniors and other vulnerable residents.

This issue includes the seasonal reminders and service updates you need to stay safe and keep moving forward during the coldest months of the year. We've also included some stories about noteworthy projects and programs that are adding value and improving the quality of life in our community.





Report a missed snow removal or damage at
menomonee-falls.org/report



Snow should not be shoveled
or blown into the street

Snowy Season Service Reminders

With snowfall common in Wisconsin from November through April, keep this information in mind:

- **Snow Plowing** – The Village commences snow and ice control operations when snow accumulation reaches two inches and it is still snowing (or more snow is in the forecast), when ice or drifting snow is causing hazardous travel conditions, or when a snowfall is affecting peak travel times. [For details on snow/ice control and other Public Works Winter Operations see page 13.](#)

Do not pull up behind snow plows when they are equipped and engaged for snow removal operations. They frequently back up and have large blind spots. State law requires a following distance of no closer than 200 feet on any highway having a posted speed over 35 miles per hour and a minimum of 75 feet on any highway with a posted speed of 35 miles per hour or less (see [Following Distances of an Operating Snow Plow](#) flier for more information).

- **Sidewalks & Trails** – It is the responsibility of the owner or person in charge of any property to clear sidewalk snow within 24 hours of a snowfall event (or treat with salt/sand if ice has formed). The Village is responsible for sidewalk clearance along Village properties and we also provide snow clearance in downtown Menomonee Falls. Per Village policy, asphalt trails are not considered sidewalks, so snow clearance requirements and enforcement do not apply to asphalt trails.
- **Parking on Village Streets** – Keep in mind that no overnight parking is permitted on any public street without a special privilege parking permit. This becomes especially important during snow events when plows are often working through the night

and early morning hours. In the event of a snowfall over three inches, there is no parking along Village streets until snowplowing operations are complete (except for loading/unloading).

- **Mailboxes** – You are responsible for clearing the snow away so that the mail carrier can deliver your mail. Residents are encouraged to check the condition of your mailbox and post. In most cases, a strong post and secure mailbox will withstand the impact of snow coming off of the snowplows.
- **Right-of-Way Damage** – Snow plows may cause damage to turf adjacent to streets and sidewalks. Turf that has been damaged and reported will be repaired in the spring. The Village will not be responsible for damage as a result of the use of sand or de-icing chemicals or for damage to landscaping, sprinkler systems, or any other private items located in the public right-of-way.
- **Garbage & Recycling** – Utilize your driveway or clear an area along the side of your driveway to safely place your refuse and recycling carts. The carts should be located at least three feet from each other, your mailbox, or other obstructions with the lid opening toward the street at the back of the curb/shoulder.

Winter Safety Tips – Use caution when passing a moving snow plow. The blowing snow around a plow may block the view of the plow blades, on-coming traffic, and/or other obstacles.

Do not allow children to build snow forts at driveway corners or in the snow berms along the curb and street.

If you are inactive/have a history of heart trouble, talk to your doctor and use precaution before shoveling snow.

The New Village Park

Your downtown gathering space

Village Park by the Numbers:

- Designed to be welcoming for events ranging from five to 5,000 people
- 0.15 mile trail loop
- 13 lamp posts and 13 bollard lights installed
- 72 trees and shrubs planted
- Five feet: drop from plaza to bottom of great lawn

Over the course of eight months, the eastern extent of Village Park has been transformed into a community destination area complete with a performance stage, multipurpose event plaza, restroom/shelter building, lighting features, a trail loop, great lawn, unique landscaping, and convenient electric access. The plaza and trails opened to the public in late November.

While construction has concluded, some work remains before Village Park is ready to host large events. Finishing touch projects for the site include the establishment of the lawn areas and the installation of seating, bike racks, and trash receptacles.

For additional photos of the Village Park project, visit menomonee-falls.org/villagepark

What's Next?

The Village held a ribbon cutting on December 2nd to mark the completion of the park. This event was open to the public and included a short ceremony, hot drinks, and refreshments.

Looking ahead to 2021, Village Park is expected to host a weekly farmers market, a beer garden, and a number of concerts and special events. The Downtown Business Improvement District is taking the lead on coordinating events, and the Village expects Village Park to be scheduled with programming throughout the year.

Future plans call for a splash feature and inclusive play area west of the great lawn, but the Village is not moving forward on that project until at least 2022.

(Re) introducing **Village Park**

For more photos visit menomonee-falls.org/villagepark



A variety of new features contribute to this dynamic outdoor event space in the heart of Menomonee Falls.

- 1 Circular seating area on the south side of the plaza
- 2 Falls Fest Plaza commemorates the 25 year run of Falls Fest which was held at Village Park from 1992 to 2016
- 3 A view down Mill Road which has been rebuilt and incorporated into the park design as an area for food trucks and trailers
- 4 Bollard lighting was installed to illuminate the plaza space for evening events
- 5 Performance stage lighting



Winter 2020-2021

Construction & Development Projects



Public Projects

Capital projects which improved public spaces, streets, and infrastructure in 2020 included the reconstruction of the intersection of Appleton Avenue, Pilgrim Road, and Menomonee Avenue, the completion of upgrades to Schumann Stadium, and the creation of a teen area and makerspace at Menomonee Falls Public Library.



The Appleton Avenue, Pilgrim Road, and Menomonee Avenue intersection was reconstructed with pedestrian improvements



Schumann Stadium at Menomonee Falls High School



Teen Space at the Men. Falls Public Library

2020 in Review: Selected Infrastructure Projects

- Appleton Avenue, Pilgrim Road, & Menomonee Avenue intersection project
- 0.8 miles of new streets at Silver Spring Estates and Aero Park subdivisions
- 0.7 miles of reconstructed streets and 2.1 miles of asphalt repaving
- 3.2. miles of water main and 0.9 miles of sanitary sewer
- 1,442 linear feet of sidewalk replacement
- 50+ new public parking stalls created downtown
- 0.3 miles of new asphalt trails near new subdivisions
- Rotary Park bathroom update and softball field score board replacement

Home Projects During the Pandemic

With many residents working from and spending more time at home in 2020, the Village has issued more permits for some types of residential construction projects. Compared to 2019, the Village has seen these increases through October:

+19% Zoning permits issued for backyard projects like sheds & gazebos

+34% Lower level remodels (many included office build outs)

Pool installations **+73%**



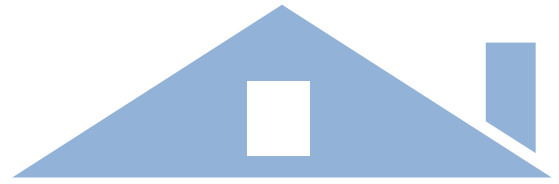
One of the 93 deck projects permitted by the end of October

Private Sector Projects

Despite economic uncertainty in 2020, both the residential and commercial development sectors have remained strong in Menomonee Falls with dozens of projects adding homes, value, and new jobs to the Village.



A new home at Silver Spring Estates Subdivision



Menomonee Falls leads the region in home construction in 2020. As of the end of the third quarter, the Village had issued permits for 9.2 percent of the housing units constructed in the Milwaukee Metropolitan Area this year.



Glenroy Incorporated



Ascension Hospital



Tamarack Springs



The Highlands at Aero Park



The Hounds & Tap



Aquinas Academy

- **15** new buildings are under construction in the Tamarack Springs townhouse apartment development
- Projects nearing completion at Leonardo DRS, Milwaukee Tool, and Glenroy Inc. will add hundreds of jobs to Menomonee Falls in 2021
- The Hounds & Tap will be the **1st** combination tavern, dog park, and dog services business in Wisconsin
- **98** single family homes and 4 duplex units have been approved through November
- **16** senior dwelling units are under construction in the Highlands at Aeropark development
- New construction value may exceed **\$100 million** for the 7th year in a row

2021 General Operating Budget Overview

Key Budget Details

- Mill rate maintained at \$5.20 per \$1,000 assessed value
- 5.5% General Operating Budget decrease (fire equipment expenditures much lower than 2020)
- Village tax levy increase of 0.6%
- No change to garbage & recycling special charge
- No sewer rate increase

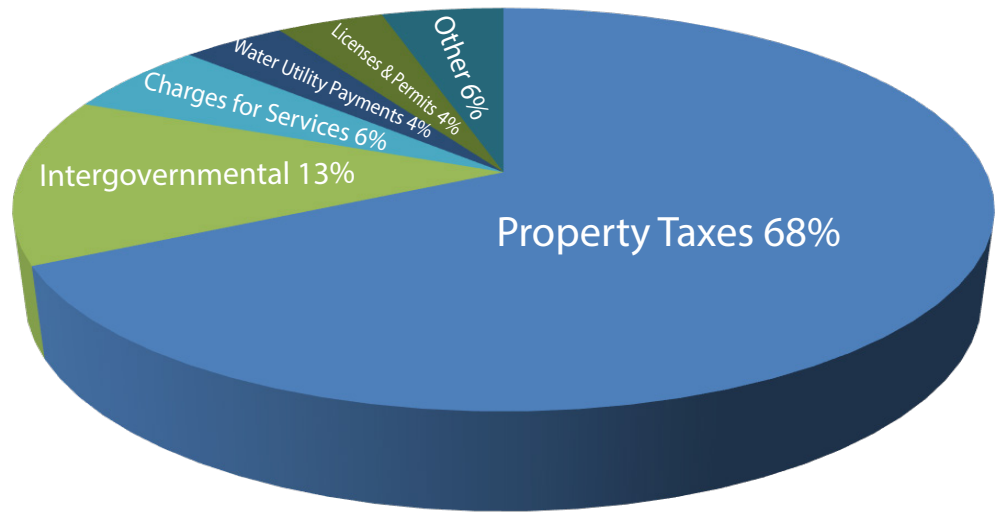
View the 2021 Operating Budget at menomonee-falls.org/budgets

Summary

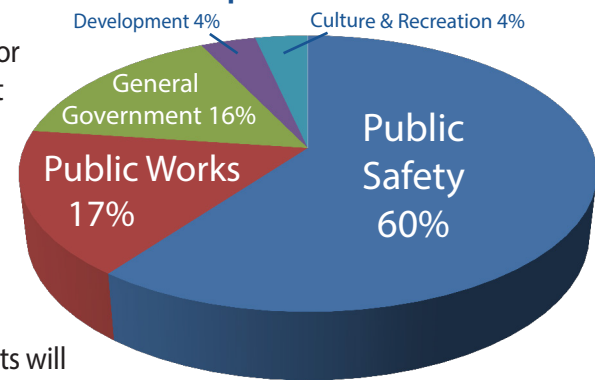
The 2021 General Operating Budget was adopted on November 16, 2020 with total revenues and expenditures of \$28,797,360, a 5.5% decrease from 2020. The budget reflects the Village's mission to provide the highest quality municipal services consistent with the changing needs and desires of the community and a realistic assessment of resources available.

The primary source of financing for the General Operating Budget (68%) comes from property taxes. Village spending for operations includes general government, police, fire, public works, development and parks operations. All Village departments will be decreasing their expenditures for 2021.

Revenue Sources



Expenditures



2021 Village Tax Levy

The Village Board adopted a mill rate of \$5.20 and a tax levy of \$24,775,000. This represents an additional investment of \$140,000 from 2020.

For a typical Menomonee Falls home valued at \$275,000, the owner will pay \$1,430 in Village property taxes in 2020. At a monthly cost of \$119.17 for Village services, a typical property owner receives a good value compared to other common household monthly costs.



How is My Property Tax Dollar Spent?



Election Information & Reminders for 2021

Elections

Make sure you are registered and ready to vote by visiting myvote.wi.gov. MyVote is a great tool allowing voters to register online, update a name or address, request absentee ballots, find your polling location, see what is on your ballot, and answer any questions that you may have.

2021 Election Schedule

- 2/16/2021 Spring Primary (if required)
- 4/6/2021 Spring Election

For more information, follow the links below.

Wisconsin Election Commission:

elections.wi.gov

Menomonee Falls elections and voting page:

menomonee-falls.org/1140/elections-voting

A Look Back at the 2020 General Election

By the numbers, the fall General Election was unlike any other in history. Disclaimer: the ballot numbers shown below are unofficial election totals.

- 12,178 absentee ballots mailed to voters
- 11,592 mailed absentee ballots returned
- 7,352 in-person absentee voters
- 6,567 ballots cast on Election Day at the polls
- 154 poll workers



Tax Information

To view, print, pay, or verify payment of a tax bill, please visit tax.waukeshacounty.gov

For additional tax bill information,
[view the 2020 tax bill insert](#)

Park Shelter Reservations

Park reservations resume on January 4, 2021 and must be made in-person at Village Hall. For further information please call 262-532-4200 or visit menomonee-falls.org/parkreservations.

Dog Licenses

2020 dog licenses expire December 31, 2020. To license your dog, submit a completed application for dog license and a \$10 fee per dog (\$15 for unneutered/unspayed dogs) to the Clerk Services Department. After March 31, fees increase to \$15 for neutered/spayed dogs and \$20 for unneutered/unspayed dogs.

COVID-19 Safety Information

The number of positive coronavirus tests in Waukesha County increased throughout the fall and the Wisconsin Department of Health Services continues to classify Waukesha County and our neighboring counties at a Critically High activity level for disease spread.

How to protect yourself and others

- Wash your hands often
- Avoid close contact
- Cover your mouth and nose with a mask when around others
- Cover coughs and sneezes
- Clean and disinfect frequently touched surfaces
- Monitor your health daily

For details, visit the [Centers For Disease Control website](https://www.cdc.gov) and for the latest information and guidance about COVID-19 from the Waukesha County Public Health Department, visit www.waukeshacounty.gov/COVID19

Library Corner

Seasonal Updates & Initiatives of Menomonee Falls Public Library



2021 NEA BIG READ in the Falls

Be a part of Menomonee Falls' community-wide read! Everyone is invited to read, explore, discuss, and celebrate *Into the Beautiful North* by Luis Alberto Urrea. The novel centers on a teenage girl living in a small Mexican Village. The drug cartel are slowly moving into her area, and all the adult men in the village have gone north to America for work. She gets a group of friends together to head north and bring the men back to defend the village.

NEA Big Read is a program of the National Endowment for the Arts (NEA) designed to broaden our understanding of our world, our communities, and ourselves through the joy of sharing a good book.

A full calendar of Big Read events will be available in February.



NEA Big Read is a program of the National Endowment of the Arts in partnership with Arts Midwest.



For more information on library programs, services or resources, please call 262-532-8900, stop in, or visit the library website at menomoneefallslibrary.org.

Featured Teen Programs

Teen Twitch: Gaming

Wednesdays at 3:00 pm

- December 16
- January 27
- February 24

Join us on our Twitch stream to host a series of wacky, irreverent online party games from the Jackbox suite, all of which are designed to be played by large audiences.

Teen Take & Make Kits

Every other week we will supply the materials for a take home craft. This program is intended for ages 12-18. Registration is required as quantity is limited.

- February 1-5, Sharpie Mugs
- February 15-19, Mug Cakes

Children's and Family Programs

Book Walks

- December 9 – January 2: The Snowy Day by Ezra Jack Keats
- January 6 – 30: Over and Under the Snow by Kate Messner
- February 3 – 27: Where's My Teddy? by Jez Alborough

Read stories through the windows outside of the Children's Department.

Take & Make Craft Kits for Families:

New Year's Eve

- December 26 – 31

Ring in the New Year from home with this special Take & Make Craft Kit designed for families! Each kit will include supplies and materials for up to four people. Registration is required as quantity is limited.

Winter Driving Wonderland

The all too familiar sights and sounds of winter driving will be upon us soon. Many drivers will be plagued with the unanswered question during the first of the season's snowfall: "Did everyone forget how to drive in the snow?". This scene seems to repeat itself every year as many drivers fail to take the necessary steps in preparing for and navigating the snowy roadways that occur through the winter months here in Wisconsin.

Back in December of 2013, the Menomonee Falls Police Department responded to the largest local multi-vehicle crash in recent memory to occur during heavy snow (see diagram at right). While we cannot control mother nature, this article provides some preventative safety tips and some helpful information to consider if you find yourself involved in a car crash this winter.

First and foremost, it is important to maintain a safe vehicle anytime of the year. However, for snowy driving conditions the two main recommendations are to ensure you have properly functioning brakes and tires in good condition. These areas are sometimes overlooked, but there are plenty of resources out there to assist you in determining proper tread depth on your tires and inspection of your brake assembly condition.

It is equally important to ensure you have allowed yourself extra time to properly clean snow and ice off of your vehicle before you head onto the roadway. We often observe vehicles with a small area scraped clear on the windshield just in front of the driver's seat. This is dangerous and greatly limits the visibility of the driver of other vehicles, pedestrians and emergency vehicles. Drivers can be cited for this if windows are not reasonably clean. Many crash investigations reveal drivers were driving too fast for conditions and were not able to maintain control. Often, these crashes can be attributed to drivers not allowing enough time for the slower travel

speeds required. Please plan ahead, drive with caution, and allow plenty of spacing between you and the vehicle ahead of you.

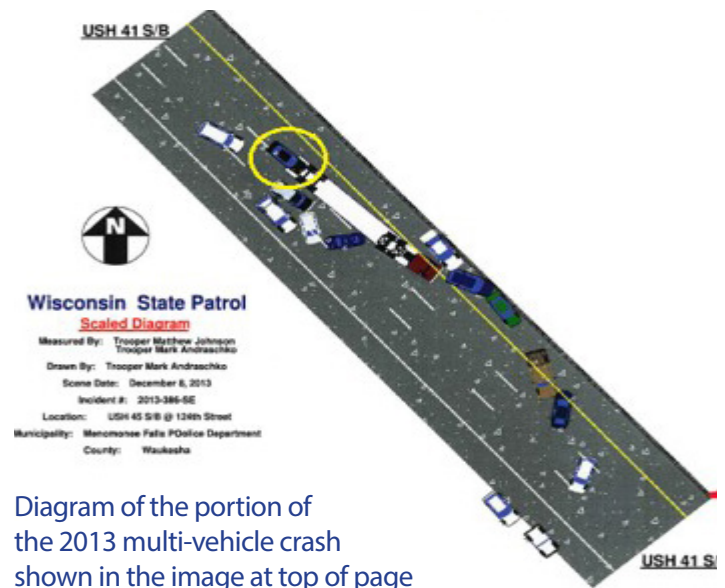


Diagram of the portion of the 2013 multi-vehicle crash shown in the image at top of page

If you find yourself involved in a winter crash, please be aware that crashes are often occurring throughout the Village, and there may be a delay in police response. Crashes involving injury, blocked lanes of traffic, or traffic signals with exposed wires will take priority over property damage only crashes. It is important to remember that any crash involving injury to a person, \$1,000.00 or more of damage to any person's vehicle or property, or damage of \$200.00 or more to government-owned property must be reported (SS 346.70(1)). Property only crashes that do not meet the mandatory reporting can be handled by a simple driver exchange of information as well as driver reported on-line through WI DOT. These options do not require a law enforcement response. When in doubt please call for a police response.

A Primer on Chimney Safety

As you relax in front of your fireplace, the last thing you might be thinking about is the condition of your chimney. However, if you don't give some thought to it before you light those winter fires, your enjoyment may be very short-lived.

Dirty chimneys can cause chimney fires, which damage structures, destroy homes, and injure or kill people. Indications of a chimney fire have been described as creating:

- loud cracking and popping noise
- a lot of dense smoke, and
- an intense, hot smell

Chimney fires can burn explosively – noisy and dramatic enough to be detected by neighbors or people passing by. Flames or dense smoke may shoot from the top of the chimney. Homeowners report being startled by a low rumbling sound that reminds them of a freight train or a low flying airplane. However, those are only the chimney fires you know about.

The Majority of Chimney Fires Go Undetected


Slow-burning chimney fires don't get enough air or have fuel to be dramatic or visible and they often go undetected until a later chimney inspection, but, the temperatures they reach are very high and can cause as much damage to the chimney structure – and nearby combustible parts of the house – as their more spectacular cousins.

Creosote & Chimney Fires

Fireplaces and wood stoves are designed to safely contain wood-fuel fires, while providing heat for a home. The chimneys that serve them have the job of expelling smoke, water vapor, gases, unburned wood particles, hydrocarbon, tar fog and assorted minerals. As these substances exit the fireplace, or wood stove, and flow up into the relatively cooler chimney, condensation occurs. The resulting residue that sticks to the inner walls of the chimney is called creosote. Creosote is a black or brown residue that can be crusty and flaky...tar-like, drippy and sticky...or shiny and hardened. All forms are highly combustible. If it builds up in sufficient quantities – and the internal flue temperature is high enough – the result could be a chimney fire.

Conditions that encourage the buildup of creosote:

- restricted air supply
- unseasoned wood
- cooler than normal chimney temperatures



Air supply may be restricted by closing the glass doors, by failing to open the damper wide enough, and the lack of sufficient make-up air to move heated smoke up the chimney rapidly. Burning unseasoned wood keeps the resulting smoke cooler, than if seasoned wood is used.

The Effect of a Fire on Your Chimney

Masonry Chimneys: When a chimney fire occurs in a masonry chimney – whether the flue is an older, unlined type or tile lined to meet current safety codes – the high temperatures at which they burn (around 2000°F) can “melt mortar, crack tiles, cause liners to collapse and damage the outer masonry material”. Most often, thermal shock occurs and tiles crack and mortar is displaced, which provides a pathway for flames to reach the combustible wood frame of the house. This event is extremely dangerous, call 911 immediately.

Prefabricated Metal Chimneys: These chimneys are typically designed to withstand flue temperatures up to 2100°F – without sustaining damage. Under chimney fire conditions, damage to these systems still may occur. When prefabricated, factory-built metal chimneys are damaged by a chimney fire, they should no longer be used and must be replaced.

Proper Maintenance

Clean chimneys don't catch fire. Make sure a Certified Chimney Sweep inspects your solid fuel venting system annually, and sweeps and repairs it whenever needed. Your sweep may have other maintenance recommendations depending on how you use your fireplace or stove.

Text used with permission from the Chimney Safety Institute of America. Learn more at www.csia.org/chimneyfires.html



Adopt a Hydrant and Keep'em Clear

Winter weather in Wisconsin can be very unpredictable for those of us who are not on vacation somewhere warm. One of the most problematic conditions is snowfall. At times the amount of snow we receive is minimal. Other times it can be significant.

When the Menomonee Falls Fire Department responds to a report of a fire, the responding fire crews "spot" hydrants as they approach the scene. Finding the closest fire hydrant and being able to connect fire hoses is critical during an actual fire. Fire hydrants supply the water necessary to extinguish fires in homes and businesses. If fire hydrants cannot be located and accessed for use, a delay in putting out the fire is possible. A fire doubles in size every minute. This situation can have a catastrophic effect on a building and its occupants.

In 2020, the Menomonee Falls Fire Department is again asking everyone to help with the "Adopt a Hydrant" program. There is no need to notify the Fire Department about a hydrant you have adopted, as this is an informal volunteer program. This program is intended to assist the Menomonee Falls Fire Department in locating and clearing the snow from fire hydrants before they are needed in an emergency.

Clearing the snow from the hydrant in your yard or your neighbor's yard could be lifesaving. Snow should be removed at least three feet around each hydrant and to the street in order to make it visible and accessible for Fire Fighters to connect hoses. The few minutes it will take to shovel snow around a fire hydrant could truly make the difference between life and death.

In 2018, Mr. Peter Nintzel (Cub master of Pack 75) and the members of Pack 75 approached the Fire Department and wanted to start an initiative in which the Scouts would work with the Fire Department to keep our Fire Hydrants clear of snow during the winter months. Mr. Nintzel graciously offered the assistance of members of his Cub Scout Pack to shovel snow from around Fire Hydrants in their neighborhoods. Once the Hydrants were shoveled they would attach a flag/card to the fiberglass poles on the Hydrants to show their community involvement. This endeavor was a tremendous success as well as a valuable partnership between the Scouts and the Fire Department. Mr. Nintzel has been instrumental in starting this initiative with Scout Packs and Fire Departments in many other communities in Waukesha and Washington County.



Shoveling Snow & Heart Health

Shoveling snow can cause heart attacks and other cardiac events. When shoveling snow, you should be self-aware of any unusual symptoms. These can include (but are not limited to) chest pain, jaw pain, shortness of breath, heaviness in the chest, unexplained back pain, and headache. Some tips for shoveling include:

- Warm up gradually
- Plan more time, smaller loads of snow are easier
- Breathe throughout shoveling, don't hold your breath as you move the snow
- Cool down with a walk when done



Public Works Winter Operations

A look inside the Centralized Public Works Facility salt shed

As winter approaches, we know residents might have some questions about how the Village responds to snow and ice events. Below are answers to some frequently asked questions about our winter operations.

When does Public Works come out to plow?

We have over 30 Public Works and Utilities operators that work long hours throughout the winter to ensure that our streets are plowed and treated as efficiently as possible. Snow and ice operations begin when any of the following conditions are met:

- Snow accumulation of 2" and more snow is expected
- Drifting snow is causing hazardous travel conditions
- Icy conditions are adversely affecting travel
- Time of snowfall is affecting peak travel times

What is the goal of snow and ice operations?

The immediate objective of snow and ice control operations is to maintain reasonably safe driving conditions during and following storm events. This does not, however, mean that bare pavement should be expected by motorists, nor does this mean that all streets will be free of snow and ice. Motorists and pedestrians are expected to take necessary precautions and to observe safe winter driving habits.

Keep in mind that our snow and ice operations focus first on the heavily-traveled roadways in Menomonee Falls, such as Main Street, Appleton Avenue, and Menomonee Avenue. Collector and subdivision streets will be the secondary focus for snow removal, but will only be salted on hills, curves, and intersections due to lower speed limits and less travel on these streets.

Will my waste and recycling collection be affected by winter weather?

Please be aware that freezing temperatures may delay waste and recycling pickup services from Waste Management. Severe temperatures can cause equipment issues which can lead to delays. Please note that waste and recycling receptacles should be placed at least 3 feet away from each other and other objects. During the winter, please use your driveway or clear an area along the side of your driveway to place your carts.

Do I have to clear the sidewalk in front of my house?

It is the owner's responsibility to clear the concrete sidewalk in front of the property and treat with salt or sand if ice has formed. The Village clears sidewalks in front of Village property, as well as some parts of the downtown area. Asphalt trails are not considered sidewalks, so snow clearance is not required.

What else do I need to know about winter operations?

- Snow should not be shoveled or blown into the street
- The Village encourages residents to clear the snow from any fire hydrants near your house
- Residents are asked to check the condition of their mailbox and post – in most cases, a strong post and secure mailbox will withstand the impact of snow coming off of the snowplow
- Refer to our website for more information about snow events at: [menomonee-falls.org/DocumentCenter/View/7506/](https://www.menomonee-falls.org/DocumentCenter/View/7506/)

Ring in the New Year with CE&Rec

Community Education & Recreation



View the Winter Activity Guide
at fallsrec.org

A New Year Means a New You

The year 2020 has been a challenging year, but CE & Rec has continued to create and offer safe opportunities for community members to learn, engage, socialize, and connect with others during these difficult times. Like most, we are hoping for a better 2021. Group fitness is a fun way to get in shape, reduce stress, and meet new people. Types of programs include aquatic fitness, yoga, dance, Zumba, martial arts, cycling, and Pilates. Registration for these programs, as well as many others, is taking place at fallsrec.org. If you haven't received a copy of the Winter Activity Guide, copies are available at the CE & Rec Office, Village Hall, Menomonee Falls Public Library, and Chamber of Commerce. We look forward to seeing you this winter.

School District Installs Needlepoint Bipolar Ionization System

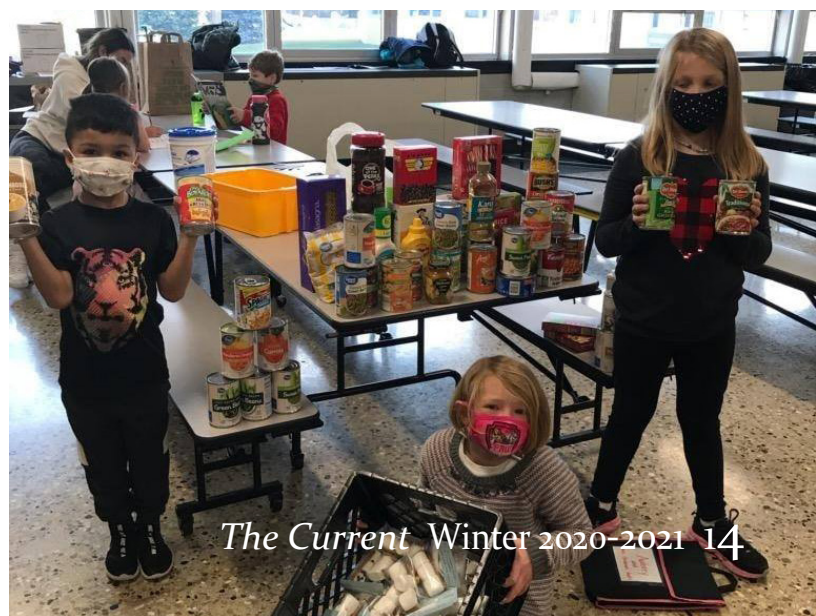
Along with all School District of Menomonee Falls buildings, the Community Center has received needlepoint bipolar ionization in its air-handling units to kill pathogens, including the coronavirus, flu, and mold, and improve indoor air quality. The needlepoint bipolar ionization system will help to ensure the safety of our program participants, students and staff by dramatically increasing the filtering efficiency in the existing HVAC systems. It's a great addition to our increased mitigation efforts to help stop the spread of COVID-19 and flu in our buildings.

Research has found bipolar ionization kills pathogens in the air. The system positively and negatively charges ions at the molecular level, attracting and attaching to allergens, viruses, mold, and other airborne particles. The particles are then trapped in the system filters, increasing the filter efficiency from about 12 percent to well over 90 percent and up to as much as 97 percent. The end result is cleaner and healthier air for participants, students, and staff to breathe without harmful chemicals.

Kindness Matters

Friday, November 13, was World Kindness Day! Students enrolled in our Shady Lane Kids INC and 4k Wrap Around programs did an amazing job collecting food donations for the Menomonee Falls Food Pantry and putting together 50 "Do You Want to Build a Snowman" kits. Thank you for all your work! Continue to spread kindness in all that you do.

Our Happy Hookers & Warm Up America knitting groups have kept busy during the COVID pandemic. They were able to donate and distribute over 1,400+ afghans, quilts, lap robes, hats, and mittens to seven local charities. Instead of the normal luncheon, charities did a curb side pick-up.



More Community Ed & Recreation Programs & Updates

Three Year old Preschool – Register by February 7th for the 2021-2022 School Year

Staff will challenge students to reach their potential, while providing an environment that is balanced between recreation, socialization, and education. We believe in an inclusive preschool model where children are unique, creative individuals that have the ability to influence their own learning. Our program will allow the children to experience a play based program. The goal is to develop the child's social and emotional language, and motor and play skills. Children will have time to play with peers, complete projects, have a snack, and learn how they can play an important role within a group. The program is available at Ben Franklin and Shady Lane Elementary Schools. A Monday/Thursday or Tuesday/Friday option is available.

Tuition for this school year program is \$1,200 for residents and \$1,450 for non-residents. Tuition will be paid monthly in 10 payments of \$120 for residents and \$145 monthly for non-residents.



North Middle School Pool Open Year Round

The North Middle School Pool serves as the community pool and is the location for many of our aquatics programs, including swim lessons. It is a great facility for lessons with 25 yards of shallow water and a bleacher viewing area. In addition to swim lessons we have open swim, lap swimming, water walking, and water exercise. Check out fallsrec.org for more information.

What is Pickleball?

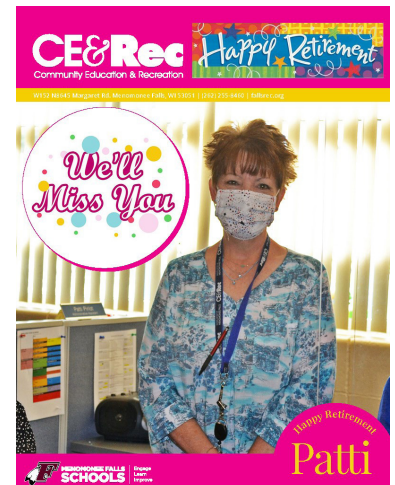
Pickleball is a paddleball sport (similar to a racquet sport) that combines elements of badminton, table tennis, and tennis. Two or four players use solid paddles made of wood or composite materials to hit a perforated polymer ball, much like a wiffle ball, with 26-40 round holes, over a net. Join us for some indoor Pickleball fun at the Community Center on Friday evenings from 5:30 – 7:00 pm or 7:15 – 8:45 pm. New sessions begin January 15th. Register online at fallsrec.org.



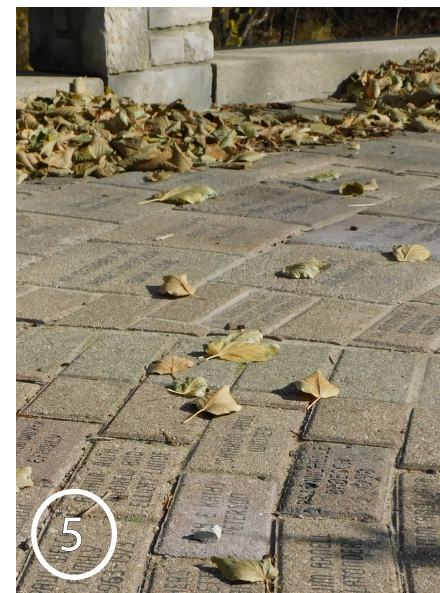
Long Time CE & Rec Administrative Assistant Retires

After 27+ years, Patti Pirlot has retired. In August of 1993, Patti was hired as a full time administrative assistant with the Recreation Department. Over the years, Patti has provided support to five different directors and several recreation supervisors, and even served as the Interim Director for a short period of time.

Just a few of her many responsibilities include the development of the seasonal activity guides, reconciling the department's finances, and serving as the main point of contact for the affiliate groups. Patti supported the administrative team in moving program registration and facility reservations online which has drastically changed the way in which registrations are processed.



Out and About in the Falls: Signs of the Season



- 1 Christmas tree at Centennial Plaza during the annual lighting ceremony on November 28th
- 2 *Welcome to Menomonee Falls* – The final addition to the 2020 Downtown Mural Project includes colorful references to the other downtown murals
- 3 This Vivian's Way sign was recently unveiled to dedicate a public art alley in honor of Falls resident Vivian Johnson
- 4 Draft horses Buddy and Bob gave wagon rides at the annual Downtown Christmas Market
- 5 Downtown donation bricks have been re-purposed at an overlook area in Lime Kiln Park
- 6 Members of MFPD pose with Vivian Johnson at the tree lighting

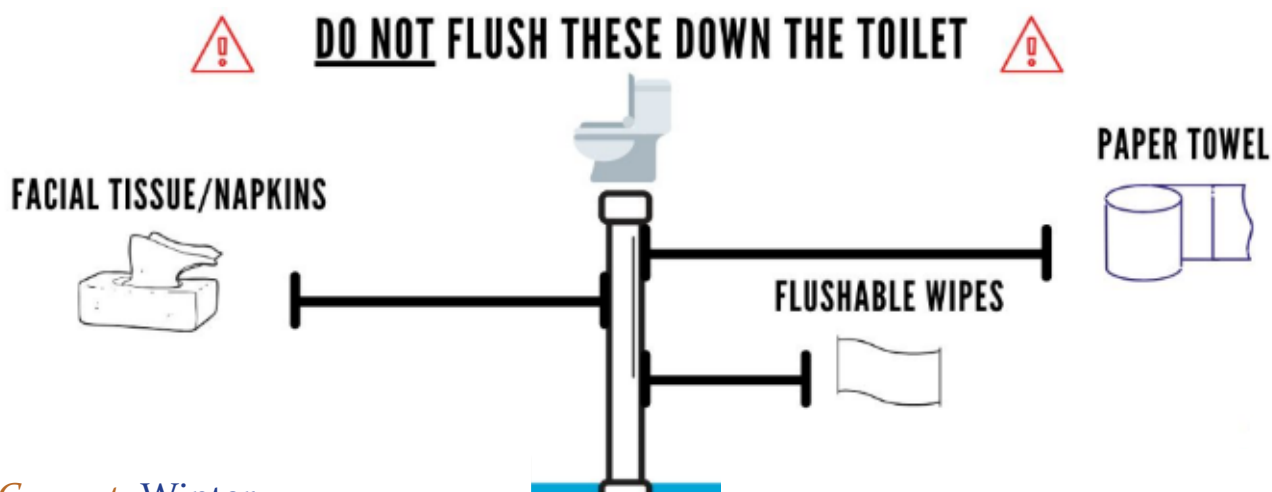


This was a Farmers Market Season like none other! Despite the COVID-19 limitations, the market had 53 vendors this year, and at the height of the season our weekly visitors reached 1,000. The vendors enjoyed tremendous support from the community. Our 2021 season opens on June 1st at our new location in the renovated Village Park Plaza. Stay tuned to [our Facebook page](#) and fallsfarmersmarket.org for off-season vendor information and market updates.

No Wipes Down the Pipes!

(a friendly reminder from the Utilities Department)

Even though the product packaging may say “flushable” and “biodegradable”, and though they may clear the toilet, flushing anything other than toilet paper will cause problems with the sewer system downstream. Do not flush wipes, diapers, tissues, paper towels, or any products other than toilet paper.



Adopt Your Drain

to Reduce Flooding and Prevent Pollution across Southeastern Wisconsin



Did you know the Village maintains over 5,500 storm drains along public streets?

Are you looking for a safe way to stay active, involved, and connected during the pandemic? Then you should join up with people from all over Southeastern Wisconsin and Adopt Your Drain!

Adopting a storm drain is an easy way to make a big impact on the health of your community and local environment. Drain adopters volunteer to make sure that their neighborhood storm drains are free of debris and litter, preventing unwanted pollution in our rivers and lakes. Sound like something that you want to be involved in? Head to the website www.adoptyourdrain.com to learn more about the program and to sign up to adopt a drain!



Yard Waste Permits

Yard Waste Permits will be sent to all Village residents starting in January of 2021, regardless of whether one was obtained in prior years. The free permit allows residents to dispose of yard waste 35 times in a season (April-November) at the Orchard Ridge Composting Site (watch for the scale house on the west side of the road). Please note: residents must provide identification showing proof of Menomonee Falls residency along with the permit. If the permit and proof of residency are not provided, all fees will be charged. All businesses are excluded from this program.

Orchard Ridge Yard Waste Composting Facility

- The yard waste composting facility will be open through December 31, 2020.
- Acceptable forms of payment: credit card or check – cash is no longer accepted
 - Residents with a free Yard Waste Permit are allowed one visit per day to drop off:
 - One (1) cubic yard of yard waste per visit – approximately seven 30 gallon bags or containers
 - Anything over one cubic yard will be charged at a rate of \$0.015 per pound, minimum of \$3.00
 - Hours of Operation - Monday through Friday 6:30 am to 4:00 pm; Saturday 7:00 am to 11:45 am
 - Upon arrival, have your ID and permit ready to show the scale house attendant

Christmas Tree Pickup

The deadline for all natural Christmas trees to be set out by the road is the second Sunday in January. Trees will automatically be picked up as time permits – no appointments are necessary. Discarded natural Christmas trees must be clean of all decorations, lights, stands, tinsel, garland, wire, plastic bags, etc. Discarded Christmas wreaths must be disposed of in the garbage along with regular trash.



Above: A new digital readerboard sign at Village Hall will display community information and updates starting in early December





Winter Calendar

FRIDAY DECEMBER 4 (and after)
Christmas Carol Radio Show
Falls Patio Players
Video & audio-only recordings
Available on YouTube and Spotify

MONDAY DECEMBER 28 @ 10 am
The Big Little Pet Pantry
Humane Animal Welfare Society
Free pet supplies for those in need
Menomonee Falls Police Parking Lot

TUESDAY FEBRUARY 16
Spring Primary Election (if needed)
For the location of your polling place
visit myvote.wi.gov or
menomonee-falls.org/1140

FEBRUARY & MARCH
NEA Big Read – *Into the Beautiful North*
Community reading and activities
Falls Public Library & Village-wide



**Falls Area
FOOD PANTRY**

Open Tuesday & Thursday
12:00–2:00 PM and 5:00–7:00 PM
N85 W15382 Menomonee River Pkwy.

Opportunities to Give Back

The Christmas Clearing Council of Waukesha County (CCC) coordinates giving to thousands of families in need through the collection and distribution of donations. Although CCC will not host their annual Toy Shop event in 2020, they are accepting donations of gift cards/money and encouraging donors to sponsor a family for the season. Learn more at christmasclearingcouncil.org

Falls Area Food Pantry relies solely on donations and the time and talents of volunteers from the community. Consider getting involved this winter by donating food and/or money, hosting a food drive, adopting a shelf or utility (to cover operating expenses), or volunteering at the pantry. Learn more at fallsfoodpantry.org/volunteer

Stay Active



Points of Pride

Money Magazine ranks Menomonee Falls 15th on their Best Places to Live in America 2020 list – visit money.com/collection/best-places-to-live-2020/ to learn more about this recognition

Both Menomonee Falls and Hamilton High Schools rank among the top 25 in the state in the [US News Best High Schools in Wisconsin](https://www.usnews.com/best-places/schools/wisconsin/) rankings

Support a Healthy Village

Practice Wisconsin DHS guidelines for social distancing, mask wearing, and hand washing – see dhs.wisconsin.gov/covid-19/protect.htm

Give blood – visit [versiti.org](https://www.versiti.org) to schedule an appointment

Support village businesses: buy local

Check on your older neighbors and volunteer with ERAS Senior Network – see [eras.org](https://www.eras.org)

VILLAGE OF
**Menomonee
Falls**

Village of Menomonee Falls
W156 N8480 Pilgrim Road
Menomonee Falls, WI 53051-3140